



**CD100-300&500
WATER BLASTER
Diesel Driven
IMPELLER BOOSTER PUMP**

**User Guide
Maintenance Guide
Spare-parts book**



RTH Renders Technischer Handel
Böttcherweg 27
25355 Barmstedt

Telefon: +49 4122 - 55 444
Mobil: +49 172 - 411 30 90
Fax: +49 4122 - 95 38 64

Thank you for choosing our water blaster. For your safety and correct operation, please carefully read the information and instructions in this manual before use.

NOTE: All of the information stated in this manual is based on data available at the time of printing. DEN-JET reserves the right to modify or change its products and / or specification data at any time without prior notice.

DEN-JET has no responsibility or liability regarding misuse of the product or use of the product with third party products.

DEN-JET warranty's is limited to repair or replacement of faulty items at the time of manufacture.

DEN-JET has the copyright for this material and all kinds of reproduction are prohibited without DEN-JET's permission.

Model:	CD100-300	CD100-500
Data:		
Pressure [Bar]	300	500
[Psi]	4350	7250
Flow [L/min]	135	80
US Gpm	35,5	21
Power [Hp]	100	100
[Kw]	75	75
Fuel	Diesel	Diesel
Engine Speed	1800	1800
[Rpm min ⁻¹]		
Dimensions	2110 x 1110 x 1655	2110 x 1110 x 1655
LxWxH [mm]		
Weight	1500	1500
[Kg]		

- General information
 - Specification data 2
 - Index 3
 - Certificate(s) of conformity 4
 - Safety precautions 5-6
 - Medical emergency information 7

- Set-up & Use
 - Set-up & Use 8
 - Check Daily inspection 9

- Maintenance Pump
 - Lubrication 10
 - Cleaning 10
 - Storage 10

- Trouble shooting / Repair Unit
 - Problem / Repair / Service 11-18

- Spare-part lists
 - Main Spare-parts 19-20
 - Fuel Tank Spare-parts 21-22
 - Motor Pump unit 23-24
 - Pump Spare-parts CD100-500 25-27
 - Pump Spare-parts CD100-300 28-30
 - Power End Spare-parts 31-32
 - Safety Valve Spare-parts 33-34
 - Water System Spare-parts 35-41
 - Wiring diagram 42

Certificate of E.U conformity:

DEN-JET Nordic A/S
Terndrupvej 7, Astrup
DK-9510 Arden
Denmark

According to E.U. Machine Directive 2006/42/EC. Appendix IIA

We hereby declare that the Diesel driven high-pressure water blaster machine(s):

CD100-300 & 500 sea water

Has been designed, manufactured and tested to fully comply with the health and safety requirements of the E.U. machine regulations.

ANY modification or change of the machine without our prior consent will render this declaration null and void.

Appropriate E.U. regulations: E.U. Machine Directive (2006/42/EC) Current issue.
E.U. Low Voltage Directive (2006/95/EC)
E.U. EMC Directive (2004/108/EC).

Coordinated standards

Used particularly:

EN 809	pr EN 1889
EN 292 part 1 & 2	EN 60204-1
EN 574	EN 294
	EN 50081-2
	EN 6100-6-2

Date: January 2017

Benny S. Jensen

Managing Director.

WARNING Safety Precautions:

To safeguard the operator who uses the machine and its accessories and as accident prevention and protection of bystanders and property, the following safety precautions must be observed. Always treat the water blaster in the same way as any other power driven high speed cutting tool!

Never let children or people who have not been properly instructed operate the machine.

Always keep the high-pressure cleaner and the belonging accessories in good working condition. Check that the machine and its accessories are free from defects, and in good working condition, with special attention to the insulation on the electric cable. In case of defect: Do NOT OPERATE THE MACHINE! Get the machine serviced.

Eye protection must be worn at all times when operating the machine to protect against repelling or ricocheting materials hitting the eyes and causing damage.

Ear protection must be worn at all times when operating the machine to protect against hear loss during operation.

Proper footwear and protective clothing must be worn at all times when using the equipment to avoid and prevent damage to the operator.

NEVER direct the jet at yourself. Do not attempt to clean your clothes or footwear with the machine. Be especially alert when pulling or releasing the trigger as sudden reaction forces will occur

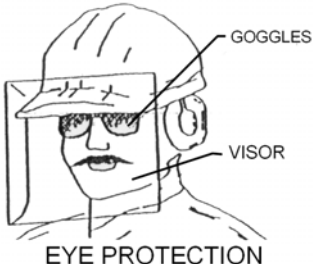




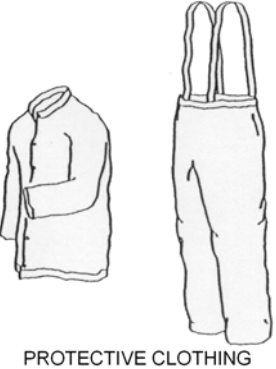
Precautions must be made to keep bystanders away from the working range. Especially when pulling the trigger as sudden reaction forces can make changes in the direction of the jet. NEVER spray-jet on humans or live animals, the high pressure jet can cause severe injury and/or death.

NEVER spray at electrical equipment, or at the machine itself.

Before service or repair: Make sure the machine is turned off, and pressure is released from the system by pulling the trigger after shutting down the machine. The machine should be disconnected from the main power supply by pulling out the electrical plug.

Safety Precautions:

The below shown protective clothing and devices should be worn both by personnel operating the water blaster system and equipment and by those working nearby:

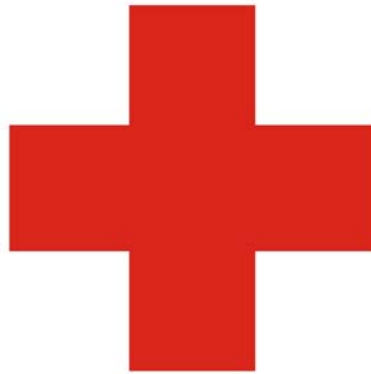
	<p>Operators must wear visors or goggles to guard against spray and flying debris. A combination of both goggles and visor is recommended. It will protect the eyes and the face during both water-blasting as well as abrasive water-blasting.</p>
	<p>Safety helmets must be worn at all time by personnel within the work area. Helmet material must be able to withstand mechanical shock exceeding 10G in 8ms without fracturing.</p>
	<p>Shear proof gloves must be worn by the operator at all times. A glove combination of a cloth inner lining and a water tight outer layer is preferable.</p>
	<p>Safety boots with steel toecaps minimum 0.5mm (0.02”) thick must be worn. The toecap must cover at least 30% of the footwear length. Basic safety footwear must also be equipped with metatarsal guards to protect the instep. Safety boots are available in numerous designs.</p>
	<p>Operators and other personnel exposed to noise levels of more than 90-dBa for more than 1 hour must wear suitable ear protection. Ear plugs or ear muffs are usually sufficient.</p>
	<p>Waterproof clothes protect the operator only from spray and flying debris. They do NOT deflect direct jet impact. Therefore, an operator must take care never to point a water-jet either at themselves or other personnel.</p>

Medical emergency information:

Immediate medical attention should be given to personnel who sustain equipment related injuries while operating the system. In such cases, it is vital that medical personnel be apprised of all facts relevant to such injuries. Therefore, all operating personnel should be provided with waterproof emergency medical alert tags or cards, describing the nature of their work and the possibility of injury inherent in the use of water jetting equipment. The below example of a standard card can be printed out or photo copied, bend, laminated and used as medical alert tag.

MEDICAL ALERT

This card is to be carried by personnel working with high-pressure water jetting equipment. Obtain medical treatment immediately for ANY high-pressure water-jet injuries.



This person has been working with water jetting at pressures up to 55,000 psi (374Mpa, 3,740bar, 3,867 kg/cm²) with a jet velocity of up to 3,000 fps (914 mps). This should be taken into account during diagnosis. Unusual infections with microaerophilic organisms occurring at lower temperatures have been reported. These may be gram-negative pathogens such as found in sewage. Bacterial swabs and blood cultures may therefore be helpful. A local poison control centre should be contacted for additional treatment information and advise.



DEN-JET Nordic A/S

Ternstrupvej 7, Astrup, DK-9510 Arden, Denmark
Tel: +45 98 55 88 68 Fax: +45 98 55 88 18 www.denjet.com

Set-Up & Use:

Mount the 3/4" high-pressure hose on to the Water-blaster by screwing the swivel on to the 3/4" high-pressure head fitting on the un-loader with hand wheel near the high pressure pump. Always use two wrenches when tightening the hoses.

Prepare the water supply for the Water-blaster, by attaching a 1.1/2" vacuum resistant hose to the supplied low pressure on the machine. The impeller pump will be able to draw in water to the pump. A prefilter must be mounted at the suction end of the hose. The pump needs to be started a few times to prime.

Fill the diesel tank with clean diesel fuel for automotive use, the tanks fuel capacity is approximately 130 Liter.

Turn on the unit by turning the key to the preheating stage, wait a few seconds then turn key to start. Throttle up the engine by pulling or turning the throttle cable. Do not run the machine without supply water. Running dry may damage feed pump and/or high pressure parts.

If using gun: Get a firm grip with both hands on the gun handle and the lance handle. Press the trigger and start blasting. Pay special attention to the fact that energizing the gun causes reaction forces that can cause the jet to change direction.

If using other valve-less accessories f.eks drain cleaning with hose and hose nozzle: Tighten the hand wheel on the high pressure un-loader valve until desired pressure is reached. Do not exceed beyond the rated pressure.

Before shutting down the pump, loosen un-loader hand wheel. After shut down of the Water-blaster, always release the pressure inside the high-pressure hoses by pulling the trigger on the spray-gun before dismantling the high-pressure hoses. Trapped high-pressure can cause severe injury.

Notice:

The machine is equipped with the following safety devices:

- a) Key switch for normal shut down (and start up). Turn key counter clockwise to stop.
- b) Low engine oil-pressure shut down.
- c) Engine over heating
- d) Low booster pump pressure.

Set-Up & Use / Daily inspection:

Check	Task
Daily Inspection	<p>Check the oil level on the crankcase of the pump, sight glass. Fill up if necessary. Check for air-bubbles in the suction hose between tank and feed pump. If there are bubbles then tighten the hose-clips. Check high pressure connections for leakage. NEVER tighten connections under pressure. Check high pressure hoses for wear and cracks. Replace if necessary. Check the oil level on the crankcase of the engine. Replenish if low. Check the air intake grille and outlet grille, Open top louvers. Clean for dust if necessary. Do NOT Cover when running. Check fan belts. Tighten / Exchange if loose or damaged. Check fuel and cooling system hoses. Replace if damaged.</p>
	<p>Notice: To prevent damage to hoses, avoid letting the high-pressure hoses rub against sharp edges for example manholes or getting squeezed in door openings etc. Replace if necessary.</p>
	<p>Inlet water temperature must be below 45°C</p>

Check	Task
Daily inspection of water filter	<p>To check if the bag water-filter cartridge is clogged and needs cleaning / changing: Notice the low pressure gauge on the operation panel. If the gauge shows a pressure Below 1 bar the filter should be OK, if the gauge shows one bar or above clean / change filter Filter change interval depends on water quality.</p>
Daily inspection of water tank strainers	<p>The strainer filters (if there is any) must be taken out and flushed when dirty. The time between cleaning depends on water quality.</p>



Maintenance, pump:

Maintenance	Task
Lubrication	<p><i>Oil renewal on the pump crankcase is to be completed the first time after no more than 50 hours of use. Oil renewal is hereafter to be completed in every 400 hours of use. Or at least one time a year.</i></p> <p><i>Use a Industrial purpose 220 Oil (+20°C to 65°C Ambient temp.) Examples: Shell Tellus 220, Esso Nuto 220, Texaco Regal EP220 Statoil: Loadway XA220</i></p> <p><i>Use an Industrial purpose 150 Oil (+5°C to 30°C Ambient temp.) Use an Industrial purpose 100 Oil (-20°C to 5°C Ambient temp.)</i></p> <p><i>Quantity: 10 (8+2) Liter including reduction gearbox.</i></p> <p><i>Fill up until the oil level is visible in the middle of the sight glass.</i></p>
Renewal of oil	<p>Switch off the machine. Loosen the oil drain screw on the lower side of the pump crank-case. Let the oil drain out into a waste oil-tray. Remount the oil drain screw and pour in new oil through the oil inlet on top of the pump until visible in the oil sight glass.</p> <p>Notice: Always dispose of the used oil in a proper manner.</p>
Cleaning	<p><i>A part of keeping the machine and its accessories in good working condition is keeping it clean. But NEVER clean the machine itself with high-pressure. Do not use solvents.</i></p>
Storage	<p><i>Keep the unit frost free, or flush the pump thoroughly with non alcoholic antifreeze fluid.</i></p> <p><i>Take of minus pole on battery for long time storage.</i></p> <p><i>Maintenance charge battery regularly.</i></p>

Trouble shooting and repair, unit:

Problem	Repair
When the key is turned the engine will not crank	<p><i>Start battery not charged enough to crank engine.</i></p> <p>Charge battery (12 Volt)</p>
The engine cranks but will not start.	<p><i>Empty diesel tank, clogged diesel fuel filter.</i></p> <p>Fill diesel tank Change fuel filter.</p> <p>If fuel supply has been stopped, manually pump fuel through to engine by means of the hand push pump on top of the diesel filter before attempting to start engine</p>
The pressure drops and the Water-blaster works irregularly.	<p><i>The strain filter is blocked or dirty or the water supply from the tap is insufficient. Air in the Suction hose.</i></p> <p>Clean the strain water filter. The machine should always suck from the water-tank. Open fresh water tap fully. Tighten the hose clamps on the suction hose.</p>
<p>The Water-blaster continues jetting at high pressure when trigger is released.</p> <p>The Water-blaster is running at high pressure when trigger is released and no jetting.</p>	<p><i>The Gun valve is stuck by dirt and indicate That the filter or hoses has not been clean before assembly</i> Replace gun rep kit and ensure that system is flushed at low pressure before mounting nozzle</p> <p><i>The check valve in the un-loader out-let fitting is stuck or leaking.</i> The hose may still contain pressure so loosen hose and bleed pressure slowly before opening fully. Clean the check-valve in the un-loader out-let fitting. Replace the O-ring.</p>
The Water-blaster does not reach the right working pressure when the trigger handle is activated.	<p><i>Leakage from: Safety valve, hose connections, trigger-gun. The pump sucks air. The high-pressure nozzle is worn or too big in size. or safety valve is not correctly adjusted, or is worn. Rupture disc is burst. Plungers packing are worn.</i></p> <p>Turn of the water-blaster. Inspect for leakage. Replace the nozzle. Set the safety valve, repair if necessary. Change rupture disc. Change packing.</p>
The Water-blaster works with approximately 2/3 of the maximum pressure, and the high-pressure hose is vibrating.	<p><i>There is dirt in the valves.</i></p> <p>Turn off the Water-blaster. Dismantle the pump head and the valves, remove the dirt and check to ensure the valve discs are moving freely and fits tight and smooth to their seats.</p>

Trouble shooting and repair, unit:

Problem	<i>Repair</i>
Excessive water leakage from under the pump	<i>Packing is worn</i> Replace packing. (Always replace O-ring as-well)
Noisiness	<i>The pump sucks air. One or more valve springs are broken or stuck. Dirt in the valves. No or too little oil in the crankcase or motor bearings worn out.</i> Inspect the low-pressure water supply. Tighten hose clips. Replace springs. Clean the valves. Replace the bearings.
Water in the oil	<i>The Oil-seal is worn out. High moisture in the air (condensing inside the crankcase) The high pressure seals are completely worn out.</i> Check or replace the oil-seals. Renewal of the crankcase oil more often. Replace the high pressure seals.

Nozzle change:

Change the nozzle when it is worn, (spray pattern becomes irregular and/or a drop in pressure occurs. Use 2 wrenches when changing nozzle. Only change to a correctly sized new nozzle. Repack nozzle thread with PTFE packing tape (if using threaded nozzles). Please notice that the size rating for one particular nozzle may differ from another, for example: The same sizes fan and straight jet may differ in pressure.

Using optional Nozzle types:

The gun can be used with different types of nozzles: Straight-jet, fan-jet and self-rotating types.

The gun is also suitable for using with wet sand-blasting.

Overhauling gun:

If the gun starts to leak or parts become damaged it can be repaired. Please refer to the main spare-parts assembly for correct position of parts during repair.

Changing / cleaning the bag filter cartridge:

Stop pump and engine. Unscrew the 4 hexagon screws on top of the round filter cartridge located at the pump end of the frame.

Take out the filter bag cartridge. Empty and clean the bag. Discard the bag if damaged. Flush the filter housing with water. Refit cleaned or new filter bag into the filter housing, ensure the length of the filter is correct, measured against the discarded bag. Clean and put O-ring back in place. Mount the filter housing and tighten the hexagon screws.

Remember to tighten the drain screw at the bottom of the filter housing if unscrewed.

Overhauling and adjusting un-loader valve:

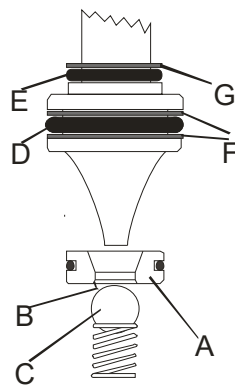
Dismantle the safety valve and overhaul by refitting the parts supplied in the repair kit(s). Please refer to the spare-part page for the safety valve on page 33&34

Re-adjust the safety valve by running the machine with a correctly sized nozzle. Pull the trigger / activate blasting, and start tighten the Hand Wheel until there is no leak from the safety valve.

Make sure that the Hand Wheel still has movement allowance after setting the correct pressure. The correct working pressure is regulated by the size of the nozzle, and the nozzle should never be too small.

Overhauling and adjusting safety valve:

Dismantle the safety valve and overhaul by refitting the parts supplied in the repair kit(s). Ensure the parts are put in place as shown below. Pay attention to the orientation of the valve seat A, the short seat edge B, should be facing the ball C. Assemble the safety valve again.

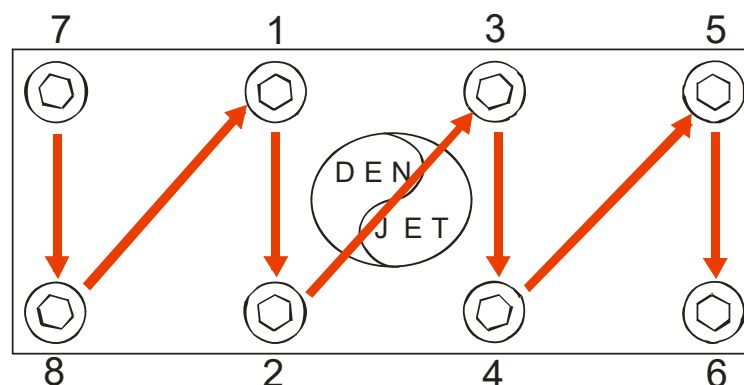


Re-adjust the safety valve by running the machine with a correctly sized nozzle. Pull the trigger and start tighten the nut for the thick black spring, until there is no leak from the safety valve.

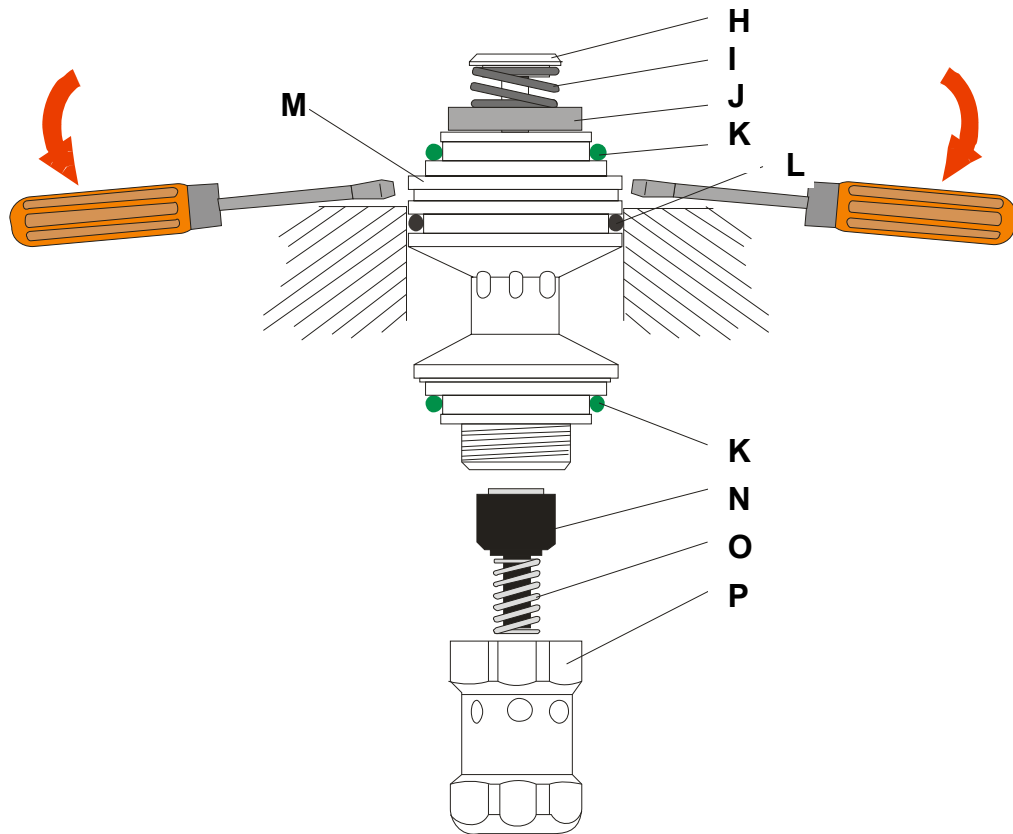
Make sure that the black spring still has movement allowance after setting the correct pressure. The correct working pressure is regulated by the size of the nozzle, and the nozzle should never be too small.

Overhauling pump, valves:

Start dismantling the front of the pump by removing water supply and cooling hoses. Loosen the cylinder head bolts in reverse order as shown:



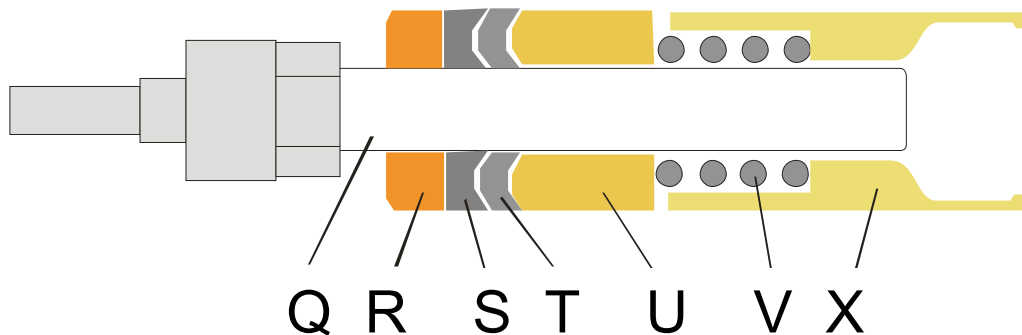
Do not loosen one bolt entirely, loosen them bit by bit and alternate according to the pattern. Pull out the valve by applying pressure in the extraction groove with 2 flat-face screwdrivers as shown below:



Dismantle the valve assembly by clamping on the spanner face of the valve-body M And unscrewing H and P. Check the mating surfaces of the inlet valve disc J and the body M, and the outlet valve N and the body M. The mating surfaces should be free from wear and tear. It is possible to touch up the mating surfaces by lapping the parts on a piece of very fine sand-paper laid out on an absolutely flat surface. If wear and tear is too severe for touch up, replace items. Ensure O-rings and packings K and L are in good condition, replace if worn. Re-assemble the valve, be careful not to over-tighten the screw H. Push the assembled valve back into the cylinder-head.

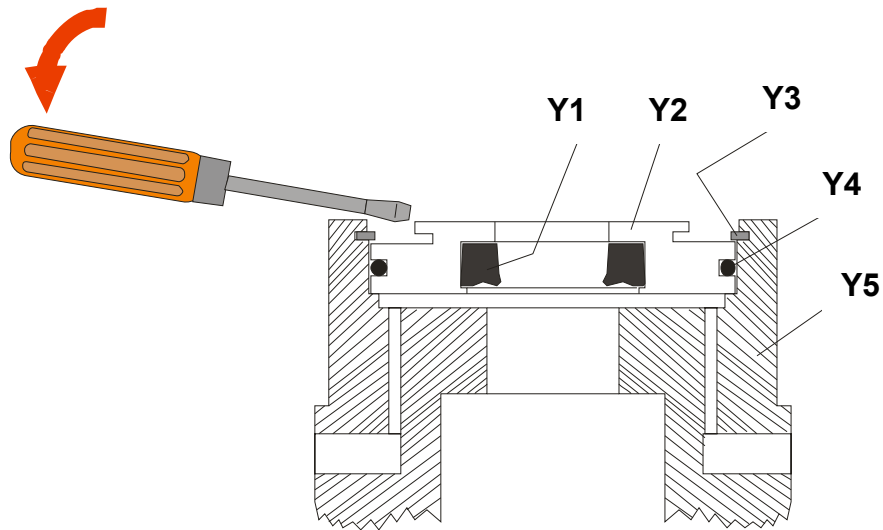
Changing Packing and Plungers:

Take of the cylinder-head as explained earlier. Remove the cooling pipes on top and below on the cylinders. Gently, to prevent plunger damage, pull out the cylinders one by one, the parts R until X will follow inside each cylinder. The plungers will remain on the crossheads extensions.



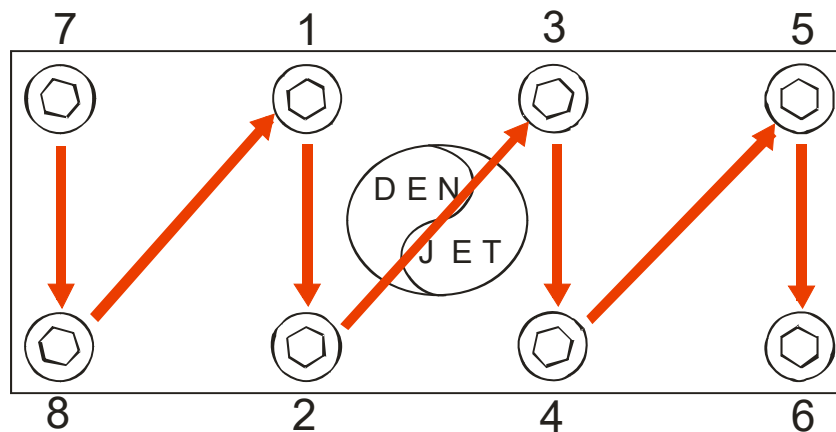
Unscrew the big retainer nut Y3 at the back of the cylinder Y 5. Remove cooling plate Y 2. Gently knock out all the internal parts in the cylinder R until X. Inspect the wear parts R, S and T replace if necessary.

Unscrew the plunger Q using the supplied orange “Z” shaped spanner. Inspect plunger surface and replace if necessary. Ensure the low pressure cooling seal Y1 is in good condition, replace both Y1 and Y4 if worn.



Assemble parts, paying attention to place position and orientation.

Remember to put back cooling pipes and cover plate before tightening the cylinder head



Tighten the bolts in the above shown pattern in steps of torque. (20Nm - 100Nm – and finally 200Nm) alternating between bolts

Maintenance / Service, Diesel Engine:

Maintenance	Task
Lubrication	<p><i>Oil renewal on the engine crankcase is to be completed the first time after no more than 50 hours of use. Oil renewal is hereafter to be completed in every 200 hours of use. Or at least one time a year.</i></p> <p><i>Use a CC or CD Grade oil (API classification) Under normal operating temperatures -30°C to 30°C use multi grade SAE10W/30 or SAE 10W/40(part number:83600870) Under cold operating temperature below -30°C use multi grade SAE 5W/20 or SAE 5W/30 Under warm operating temperature over 30°C use multi grade SAE 10W/40 Quantity: 10 Liter, Check with dip-stick. Do not overfill. Oil should visible between marks with the machine on level ground</i></p> <p><i>Remember to refit oil drain plug. Fill up until the oil level is visible at the full mark on the oil dip stick.</i></p>
Oil Filter	<p><i>Change the oil filter when changing the oil. (Part number: 81001210)</i></p>
Renewal of oil	<p><i>Switch off the machine. Loosen the oil drain screw on sump of the engine crank-case. Let the oil drain out into a waste oil-tray. Remount the oil drain screw and pour in new oil through the oil inlet on top of the engine until visible between marks on the dip-stick.</i></p> <p>Notice: Always dispose of the used oil in a proper manner.</p>
Diesel Fuel	<p><i>Use fresh clean automotive quality diesel fuel. When operating in cold environments, make sure the diesel fuel are suitable for the temperature.</i></p>
Air intake filter	<p><i>Clean air intake filter every 50-100 hours, Exchange every 200-400 Hours. (Depending on running environment. (Filter insert part number: 81001035)</i></p>
Diesel Fuel filter	<p><i>Diesel fuel filters should be changed every 400 Hours (Part numbers: Pre-filter 81001212 & Main-filter: 81001213)</i></p>
Cleaning	<p><i>A part of keeping the machine and its accessories in good working condition is keeping it clean. But NEVER clean the machine itself with high-pressure. Do not use solvents.</i></p>
Storage /Antifreeze	<p><i>Always run the engine with glycol based antifreeze mixture in the cooling system, also in hot weather. Mix accordingly with manufactures specifications to obtain the desired antifreeze temperature. Change every 2 years. The unit is protected to -30°C at delivery. The cooling system contains approximately 18 Liters of fluids.</i></p>

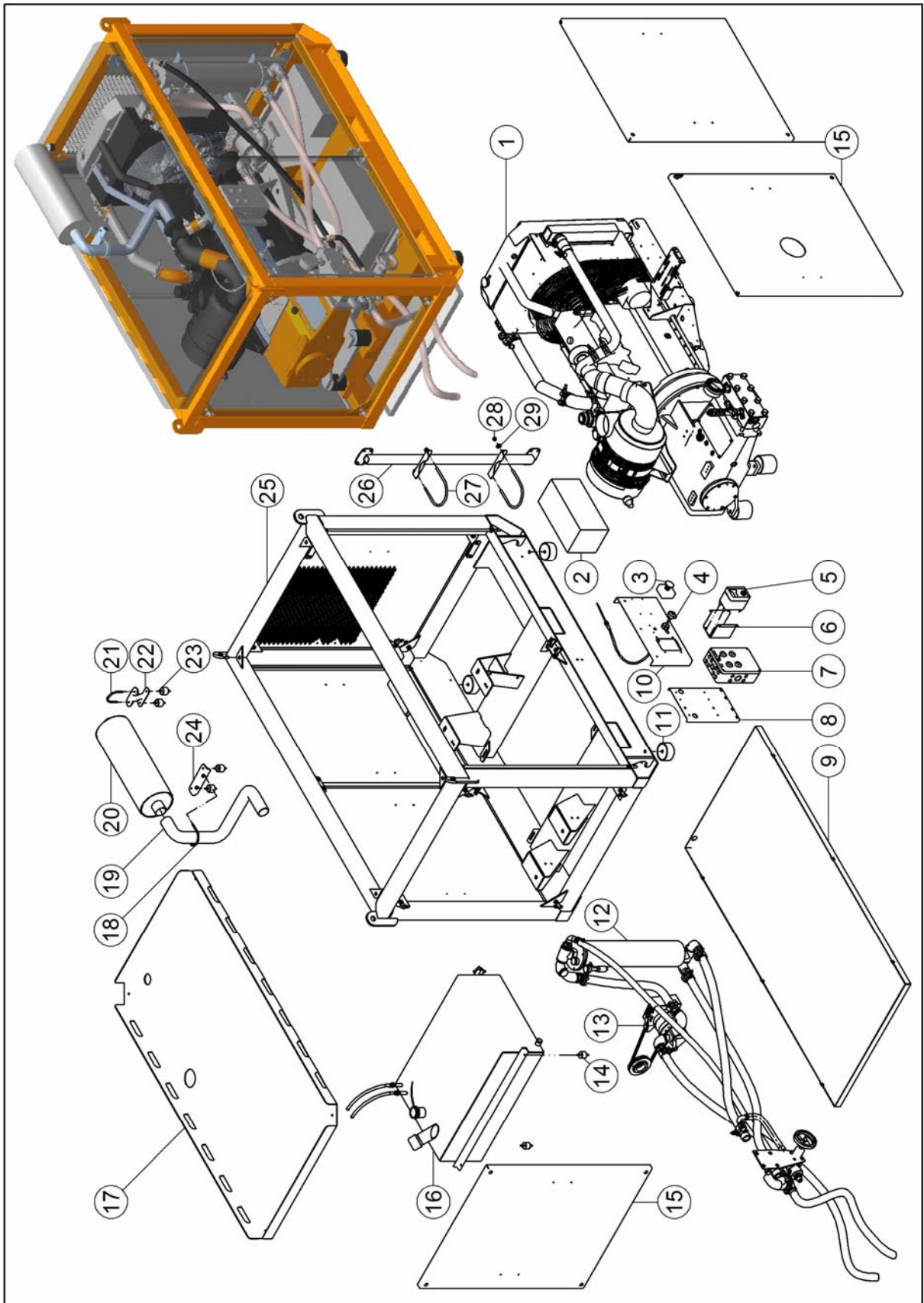
Trouble shooting / Repair, Diesel Engine:

Problem	Cause / Repair
Exhaust smoke is black	<p><i>The load is too heavy for the engine.</i> Reduce load. <i>Air intake filter dirty.</i> Clean or replace air filter. <i>Bad fuel injector nozzle(s)</i> Check nozzles, replace if spray pattern is faulty. <i>Intake/exhaust valves needs adjusting.</i> <i>Motor is worn.</i></p>
Exhaust smoke is white	<p><i>When running in cold weather and before the engine is warm white smoke is normal.</i> <i>Cylinder head gasket leaking.</i> Check cause of cooling water leak into engine. <i>Wrong injection timing.</i> Set timing correctly. <i>Air intake filter dirty.</i> Clean or replace filter. <i>Dirty fuel filter.</i> Change filter. <i>Air in fuel line, leak in fuel pipe.</i> Tighten or replace faulty fuel line. <i>Leakage around injectors.</i> Tighten or replace seal.</p>
Exhaust smoke is blue	<p><i>Oil level in crankcase too high.</i> Drain oil until correct level. <i>Too much oil fog in air breather / crankcase ventilation.</i> Check breather valve/ Valve seal. Replace breather valve and / or tube.</p>
Engine is not running smoothly	<p><i>Air somewhere in fuel line</i> Tighten or replace faulty fuel line. <i>Fault in speed-regulating governor.</i> <i>Faulty injector nozzle(s)</i> <i>Faulty Diesel distributor pump.</i></p>
Engine temperature too High.	<p><i>Low level in radiator / cooling system.</i> CAUTION when opening. Steam boiling water may escape. Fill up radiator. <i>Blocked air intake outlet grille.</i> Remove obstruction. <i>Engine is overloaded.</i> Reduce Load. <i>Fan belt (water pump belt) is broken.</i> Replace fan belt. <i>Electric fan is not running.</i> Fault in electric circuit Faulty thermostat in lower cooling hose. <i>Fuel injection timing wrong (Retarded)</i> Set correct timing. <i>Water cooling system pump faulty.</i> Replace pump.</p>

Trouble shooting / Repair, Diesel Engine:

Problem	Cause / Repair
Engine is not charging the battery	<i>Fault in the alternator / Alternator circuit</i> Find fault and rectify. Battery is faulty.
Engine stops suddenly	<i>Run out of fuel</i> Fill up with fuel, hand pump to prime. <i>Air in fuel line.</i> Bleed air. Hand pump to prime. <i>Fuel filter clogged.</i> Change fuel filter. <i>Fuel feed pump faulty</i> <i>Check pump, replace if faulty.</i> <i>Engine is stuck.</i>
Abnormal noise	<i>Fan is touching metal.</i> Make clearance. <i>Valve clearance too big.</i> Adjust valves. <i>Injection timing wrong (too advanced).</i> Adjust timing. <i>Badly worn engine bearings.</i>

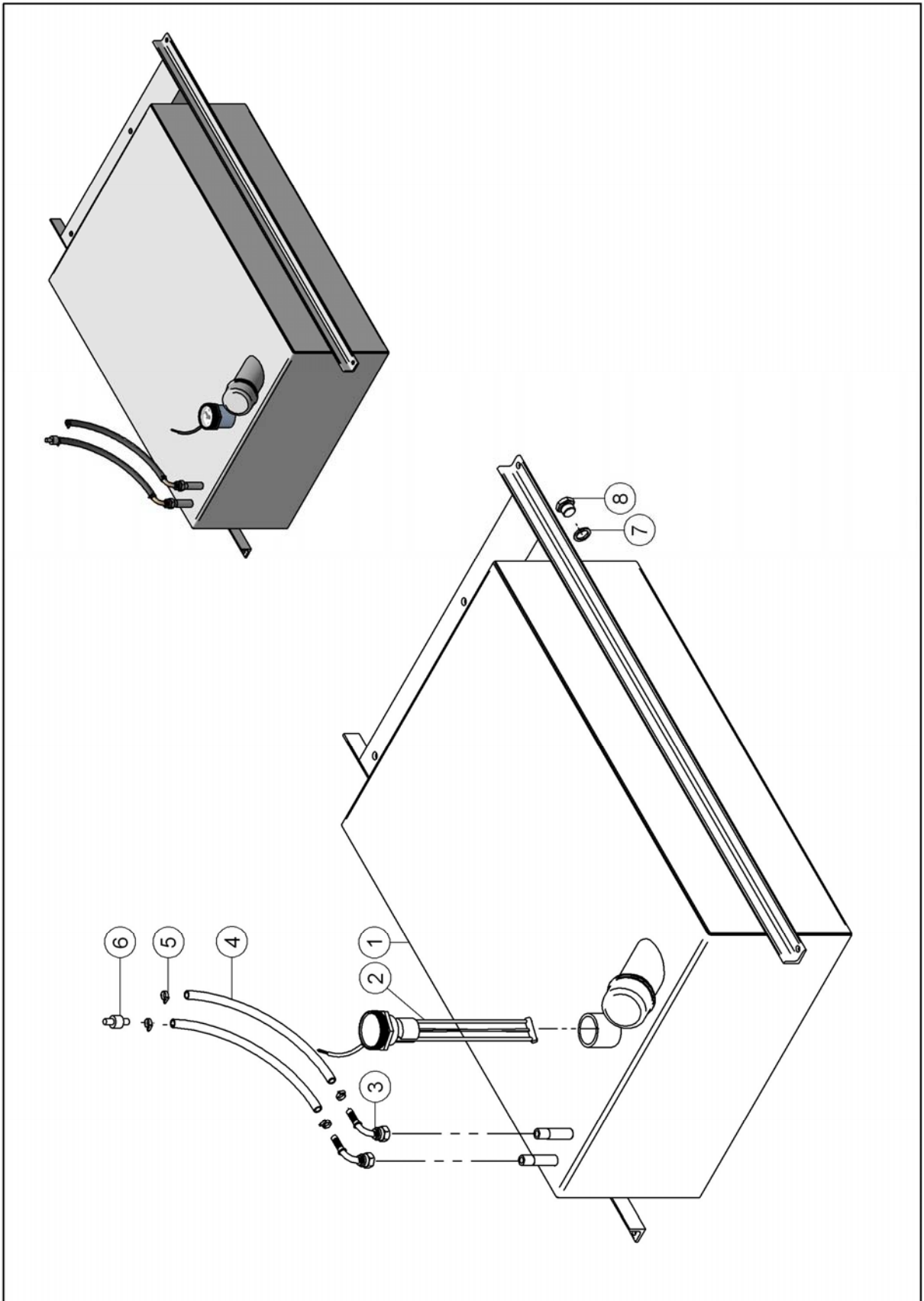
CD100-300&500 SERIES WATER-BLASTER MAIN SPARE PARTS ASSEMBLY



**CD100-300&500 SERIES WATER-BLASTER
MAIN SPARE PARTS LIST**

Pos.	Item No.	Qty.	Description
1	N/A	1	MOTOR - PUMP UNIT
2	81101015	1	BATTERY
3	81101272	1	EMERGENCY BUTTON
4	81100846	1	TROTTLE CABEL
5	81100845	1	ENGINE CONTROLLER
6	81000765	1	BRACKET ENGINE CONTROL-DEEP
7	81101350	1	REMOTE CONTROL BOX (optional)
8	81001321	1	BRACKET FOR REMOTE CONTROL (optional)
9	N/A	1	DRIP PAN CD 100-300 SLIM (optional)
10	81000766	1	CONTROL PANEL
11	81000935	4	RUBBER FOOT
12	N/A		SEA WATER FILTER
13	N/A		BOOSTER PUMP
14	81000857	4	RUBBER DAMPENER
15	81001616	1	DOOR COVER - SET OF 6 (optional)
16	81000886	1	FUEL TANK
17	81001525	1	ROOF PLATE FULL COVERAGE
18	80100938	1	U-BOLT
19	81001549	1	EXHAUST CONNECTOR
20	81000929	1	MUFFLER
21	80100753	1	U-BOLT
22	81001673	1	BRACKET FOR EXHAUST END
23	81000857	4	RUBBER DAMPENER
24	81001674	1	BRACKET FOR EXHAUST INLET
25	81001526	1	FRAME CD 100-300-SLIM
26	81001777	1	BRACKET FOR SEAWATER FILTER
27	80101159	2	U-BOLT
28	80100710	4	LOCK NUT
29	80100906	4	WASHER
N/A	81001670	1	TIP FOR MUFFLER

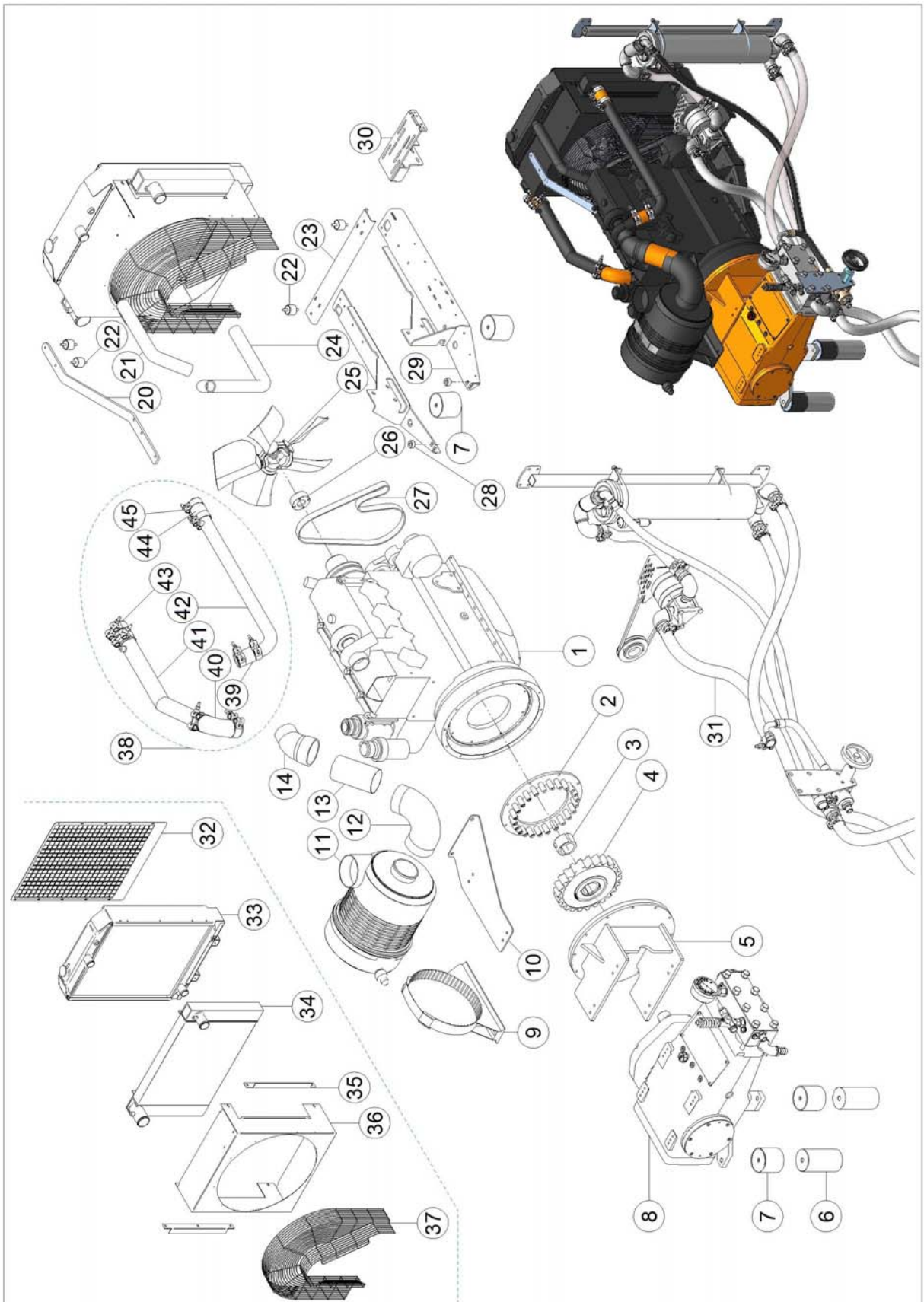
**CD100-300 SERIES WATER-BLASTER
FUEL TANK SPARE-PARTS ASSEMBLY**



**CD100-300 SERIES WATER-BLASTER
FUEL TANK SPARE-PARTS LIST**

Pos.	Item No.	Qty.	Description
N/A	81000886	1	FUEL TANK COMPLETE
1	N/A	1	FUEL TANK WELDED
2	81101187	1	LEVEL GAUGE
3	84000601	2	HOSE END
4	83400623	3m	RUBBER HOSE
5	80100904	6	HOSE CLIP
6	81100906	1	CONTRA VALVE
7	80500429	1	BONDED SEAL
8	80500617	1	PLUG
N/A	81000857	4	RUBBER DAMPENER
N/A	80100697	8	LOCK NUT
N/A	80100732	8	WASHER

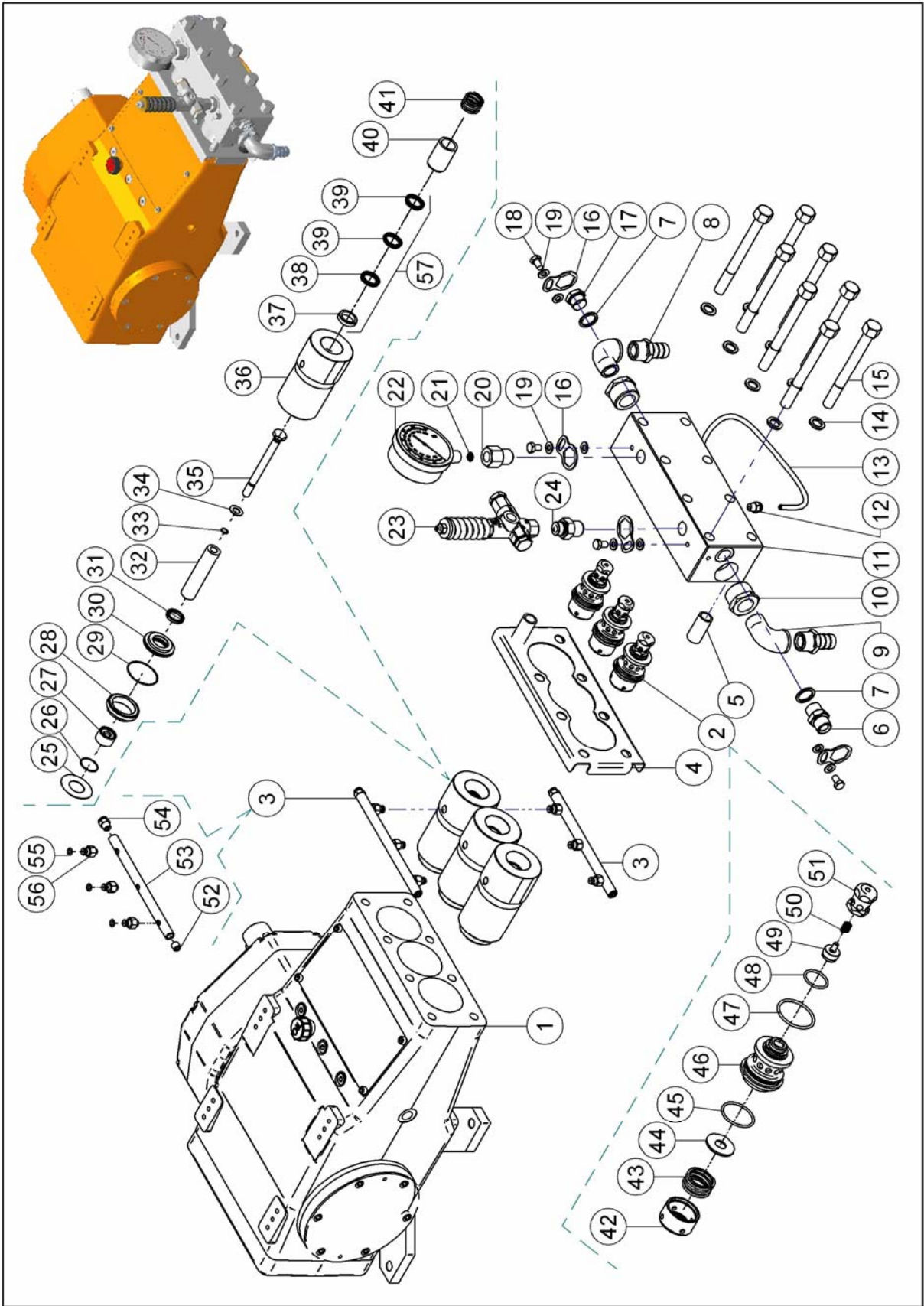
CD100-300&500 SERIES WATER-BLASTER MOTOR-PUMP UNIT SPARE PART ASSEMBLY



**CD100-300&500 SERIES WATER-BLASTER
MOTOR-PUMP UNIT SPARE PART ASSEMBLY**

Pos.	Item No.	Qty.	Description
1	81101175	1	ENGINE
2	81001650	1	COUPLING FLANGE COMPLETE
3	81000760	1	TAPER BUSH
4	81001649	1	RUBBER ELEMENT
5	81000772	1	BELL HOUSING
6	81001402	2	DISTANCE BUSHING
7	81000934	4	RUBBER FOOT
8	81201260	1	PUMP
9	N/A	1	AIR FILTER HOLDER
10	81001199	1	BRACKET AIR FILTER HOLDER
11	81000865	1	AIR FILTER (HOUSING+FILTER INSERT)
N/A	81001035	N/A	FILTER INSERT AIR INTAKE
12	81001318	1	ELBOW RUBBER
13	81001337	1	REDUCER CONE
14	81001316	1	ELBOW RUBBER
20	81001755	1	RADIATOR SUPPORT
21	81001228	1	RUBBER HOSE MOTOR - RADIATOR
22	81000857	4	RUBBER DAMPENER
23	81001709	1	TRAVERSE BRACKET FOR RADIATOR CD100/160
24	81001227	1	RUBBER HOSE RADIATOR - MOTOR
25	81101219	1	FAN
26	81001298	1	BUSHING - FAN
27	81001361	1	FAN BELT MULTI RIB
28	81001400	2	DISTANCE BUSHING
29	81001267	1	BRACKET HOLDER FOR RADIATOR
30	81001200	1	BRACKET BOOSTER PUMP
31	N/A	1	WATER SYSTEM
32	81001334	1	RADIATOR GUARD NET
33	81001217	1	RADIATOR
34	81001218	1	INTERCOOLER (optional)
35	81001332	2	WASHER PLATE
36	81001225	1	RADIATOR GUARD
37	81001224	1	RADIATOR NET
38	81001450	1	AIR PIPE INTERCOOLER SYSTEM (set) (optional)
39	83400666	1	RUBBER CONNECTOR
40	81001202	1	ELBOW RUBBER
41	81001668	1	PIPE
42	81001667	1	PIPE
43	83400667	1	RUBBER CONNECTOR
44	83400665	1	RUBBER CONNECTOR
45	80100891	8	CLIP
N/A	80100938	2	CLAMP- EXHAUST
N/A	81001210	1	OIL FILTER
N/A	81001212	1	DIESEL FUEL PRE. FILTER
N/A	81001213	1	DIESEL FUEL MAIN FILTER
N/A	81101229	1	WIRING HARNESS 4 CYL (set)
N/A	81101211	1	OIL PRESSURE SWITCH
N/A	81101193	1	TEMPERATURE SENSOR
N/A	81100968	1	BATTERY POLE POSITIVE
N/A	81100969	1	BATTERY POLE NEGATIVE
N/A	81101262	1	THERMOSTAT 83 C°
N/A	81101263	1	GASKET THERMOSTAT
N/A	81001082	1	DIESEL CHECK VALVE

CD100-500 SERIES WATER-BLASTER PUMP SPARE-PARTS ASSEMBLY



**CD100-500 SERIES WATER-BLASTER
PUMP SPARE-PARTS LIST**

Pos.	Item No.	Qty.	Description
1	81200754	1	POWER END
2	81201246	3	VALVE COMPLETE
3	81200949	2	COOLING SYSTEM COMPLETE
4	81201038	1	COVER FOR COOLING SYSTEM
5	81201055	2	RETAINING RUBBER
6	80500849	1	NIPPLE
7	80500974	2	BONDED SEAL Part of seal kit pump (81201256)
8	80500227	2	HOSE NIPPLE
9	80500237	2	ELBOW
10	80500854	2	BUSHING
11	81200950	1	CYLINDER HEAD
12	80500095	1	QUICK COUPLING
13	83400522	0,4M	HOSE
14	80100797	8	WASHER
15	80100927	8	SCREW Torque 200 Nm /3 stages 20,100,200 Nm
16	81201169	4	LOCK PLATE
17	80500496	1	PLUG
18	80100706	4	SCREW
19	80100310	8	WASHER
20	81300780	1	ADAPTOR
21	80500413	1	COPPER
22	81300700	1	GAUGE HP
23	81300695	1	SAVETY VALVE
24	81300781	1	ADAPTOR
25	81201001	3	WASHER WIPER
26	80200619	3	O-RING
27	81200941	3	PLUNGER GUIDE
28	81201156	3	RETAINER NUT
29	80200031	3	O-RING Part of seal kit pump (81201256)
30	81200940	3	COOLING PLATE
31	80200732	3	COOLING SEAL Part of seal kit pump (81201256)
32	81200922	3	PLUNGER SLEEVE
33	80200101	3	O- RING Part of seal kit pump (81201256)
34	81200947	3	PROTECTION WASHER
35	81200946	3	BOLT
36	81200942	3	CYLINDER
37	81200931	3	BACK-UP RING Part of HP seal kit (pos. 57)
38	81200932	3	BACK PACKING Part of HP seal kit (pos. 57)
39	80200737	6	FRONT PACKING Part of HP seal kit (pos. 57)
40	81200933	3	THROAT BUSHING
41	80300623	3	SPRING

**CD100-500 SERIES WATER-BLASTER
PUMP SPARE-PARTS KITS**

Pos.	Item No.	Qty.	Description
42	81200943	1	SUCTION VALVE CAGE
43	80300622	1	SPRING
44	81200935	1	SUCTION VALVE DISC
45	80200681	1	O-RING Part of seal kit pump (81201256)
46	81201229	1	VALVE BODY
47	80200811	1	O-RING Part of seal kit pump (81201256)
48	80200397	1	O-RING Part of seal kit pump (81201256)
49	81201159	1	DISCHARGE VALVE ASSYMBLY
50	80300224	1	SPRING
51	81200945	1	DISCHARGE VALVE GUIDE
52	80500341	1	PLUG
53	81201041	1	COOLING PIPE
54	80500095	1	QUICK COUPLING
55	80200340	3	O-RING Part of seal kit pump (81201256)
56	81200333	3	NIPPLE
57	81201257	1	SEAL REP. KIT FOR 1 CYLINDER
57	81201254	1	SEAL REP. KIT FOR COMPLETE PUMP

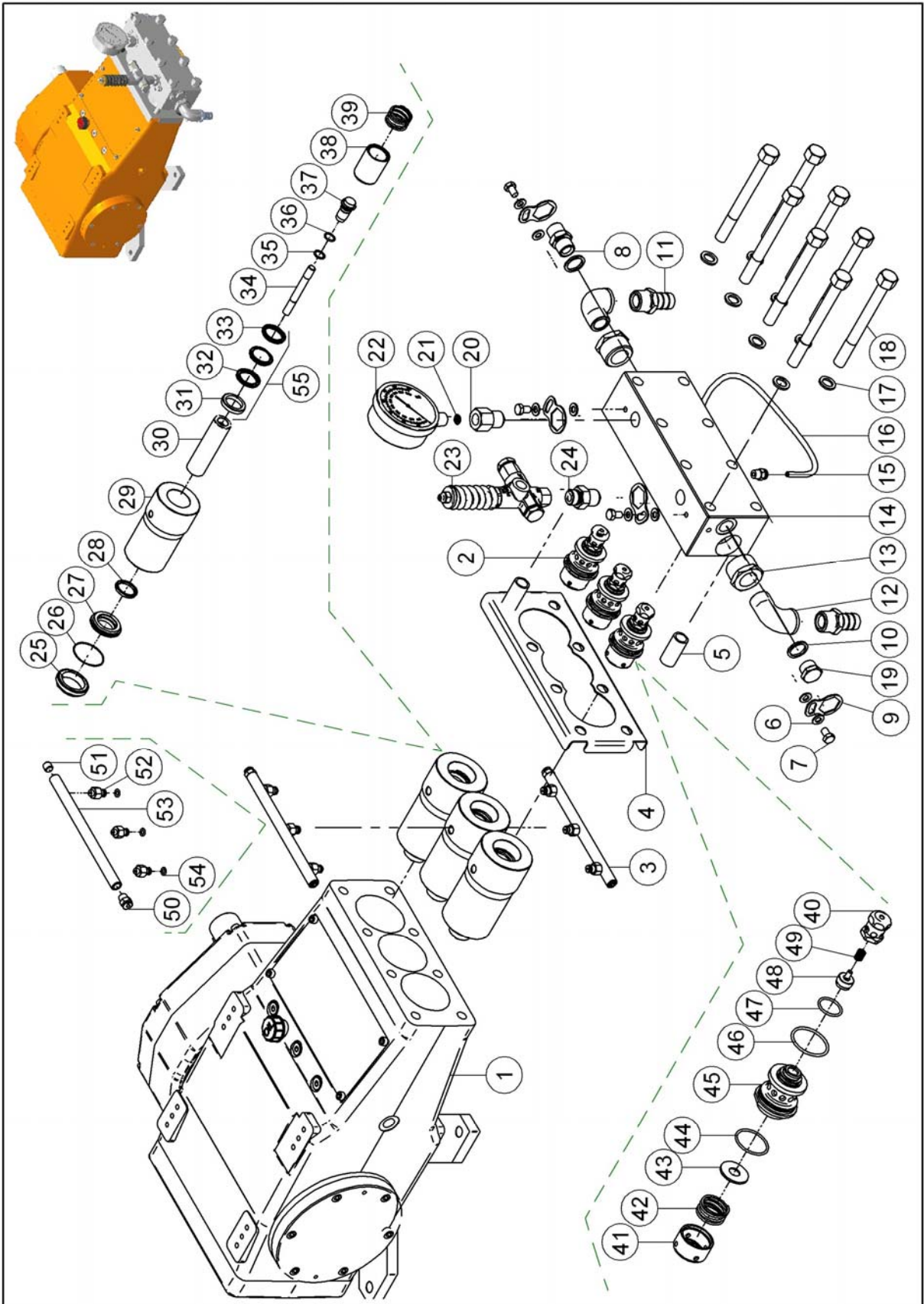
PUMP SPARE-PARTS KITS

Item No./Kit Description	Pos.	Item No.	Qty.	Description
81201256 SEAL KIT LOW PRESSURE & O-RING KIT COMPLETE TO OVERHAUL PUMP	7	80500974	2	BONDED SEAL
	29	80200031	3	O-RING
	33	80200101	3	O-RING
	45	80200681	3	O-RING
	47	80200811	3	O-RING
	48	80200397	3	O-RING
	55	80200340	6	O-RING
	31	80200732	3	COOLING SEAL

Item No./Kit Description	Pos.	Item No.	Qty.	Description
POS. 57 81201257 HIGH PRESSURE SEAL KIT COMPLETE FOR 1 CYLINDER	37	81200931	1	BACK-UP RING
	38	81200932	1	BACK PACKING
	39	80200737	2	FRONT BACKING

Item No./Kit Description	Pos.	Item No.	Qty.	Description
POS. 57 81201254 HIGH PRESSURE SEAL KIT COMPLETE TO OVERHAUL PUMP	37	81200931	3	BACK-UP RING
	38	81200932	3	BACK PACKING
	39	80200737	6	FRONT BACKING

CD100-300 SERIES WATER-BLASTER PUMP SPAREPART ASSEMBLY



**CD100-300 SERIES WATER-BLASTER
PUMP SPAREPART LIST**

Pos.	Item No.	Qty.	Description
1	81200754	1	POWER END
2	81201246	3	VALVE COMPLETE
3	81201042	2	COOLING ASSEMBLY COMPLETE
4	81201038	1	COVER FOR COOLING SYSTEM
5	81201055	2	RETAINING RUBBER
6	80100310	8	WASHER
7	80100706	4	SCREW
8	80500881	1	NIPPLE
9	81201169	4	LOCK PLATE
10	80500974	2	BONDED SEAL Part of LP seal+O-ring kit 81201265
11	80500227	2	HOSE NIPPLE
12	80500237	2	ELBOW
13	80500854	2	BUSHING
14	81200950	1	CYLINDER HEAD
15	80500095	1	QUICK CPL.
16	83400522	1	HOSE
17	80100797	8	WASHER
18	80100927	8	SCREW Torque 200 Nm /3 stages 20,100,200 Nm
19	80500496	1	PLUG
20	81300780	1	ADAPTOR
21	80500413	1	COPPER SEAL
22	81300825	1	GAUGE
23	81300695	1	SAVETY VALVE
24	81300781	1	ADAPTOR
25	81201156	3	RETAINER NUT
26	80200031	3	O-RING Part of LP seal+O-ring kit 81201265
27	81201235	3	COOLIN PLATE
28	80200810	3	COOLING SEAL Part of LP seal+O-ring kit 81201265
29	81201236	3	CYLINDER
30	81200938	3	PLUNGER SLEEVE
31	81201233	3	BACK-UP RING Part of HP seal kit 81201266 (pos. 55)
32	81201234	3	BACK PACKING Part of HP seal kit 81201266 (pos. 55)
33	80200739	6	FRONT PACKING Part of HP seal kit 81201266 (pos. 55)
34	81201002	3	PLUNGER STUD BOLT
35	80200755	3	BACK-UP RING Part of LP seal+O-ring kit 81201265
36	80200608	3	O-RING Part of LP seal+O-ring kit 81201265
37	81201003	3	PLUNGER NUT
38	81201241	3	CYLINDER BUSHING
39	80300638	3	SPRING
40	81200945	3	DISCHARGE VALVE GUIDE

**CD100-300 SERIES WATER-BLASTER
PUMP SPAREPART LIST**

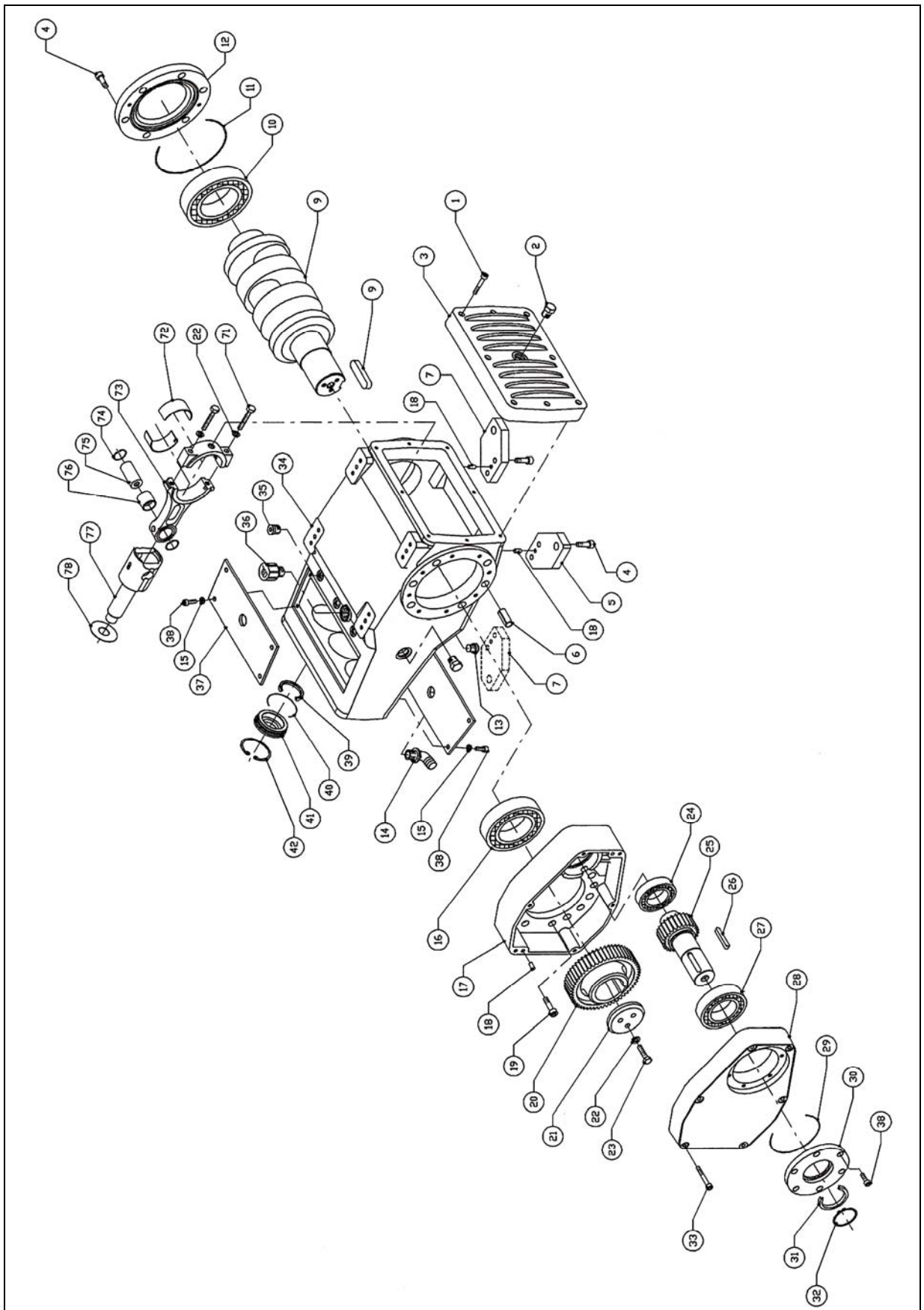
Pos.	Item No.	Qty.	Description
41	81200943	3	SUCTION VALVE CAGE
42	80300622	3	SPRING FOR SUCTION VALVE
43	81200935	3	SUCTION VALVE DISC
44	80200681	3	O-RING Part of LP seal+O-ring kit 81201265
45	81201229	3	VALVE BODY
46	80200811	3	O-RING Part of LP seal+O-ring kit 81201265
47	80200397	3	O-RING Part of LP seal+O-ring kit 81201265
48	81201159	3	DISCHARGE VALVE ASSEMBLY
49	80300224	3	SPRING
50	80500095	2	QUICK CPL.
51	80500341	2	PLUG ALLEN
52	81201044	6	NIPPLE
53	81201041	2	COOLING PIPE
54	80200340	6	O-RING Part of LP seal+O-ring kit 81201265
55	81201266	1	SEAL KIT HP COMPLETE

PUMP SPARE-PARTS KITS

Item No./Kit Description	Pos.	Item No.	Qty.	Description
81201265 SEAL LOW PRESSURE AND O-RING KIT COMPLETE TO OVERHAUL PUMP	10	80500974	2	BONDED SEAL
	26	80200031	3	O-RING
	28	80200810	3	COOLING SEAL
	35	80200755	3	BACK-UP RING
	36	80200608	3	O-RING
	44	80200681	3	O-RING
	46	80200811	3	O-RING
	47	80200397	3	O-RING
	54	80200340	6	O-RING

Item No./Kit Description	Pos.	Item No.	Qty.	Description
POS. 55 81201266 SEAL KIT HP COMPLETE TO OVERHAUL PUMP	31	81201233	3	BACK-UP RING
	32	81201234	3	BACK PACKING
	33	80200739	6	FRONT PACKING

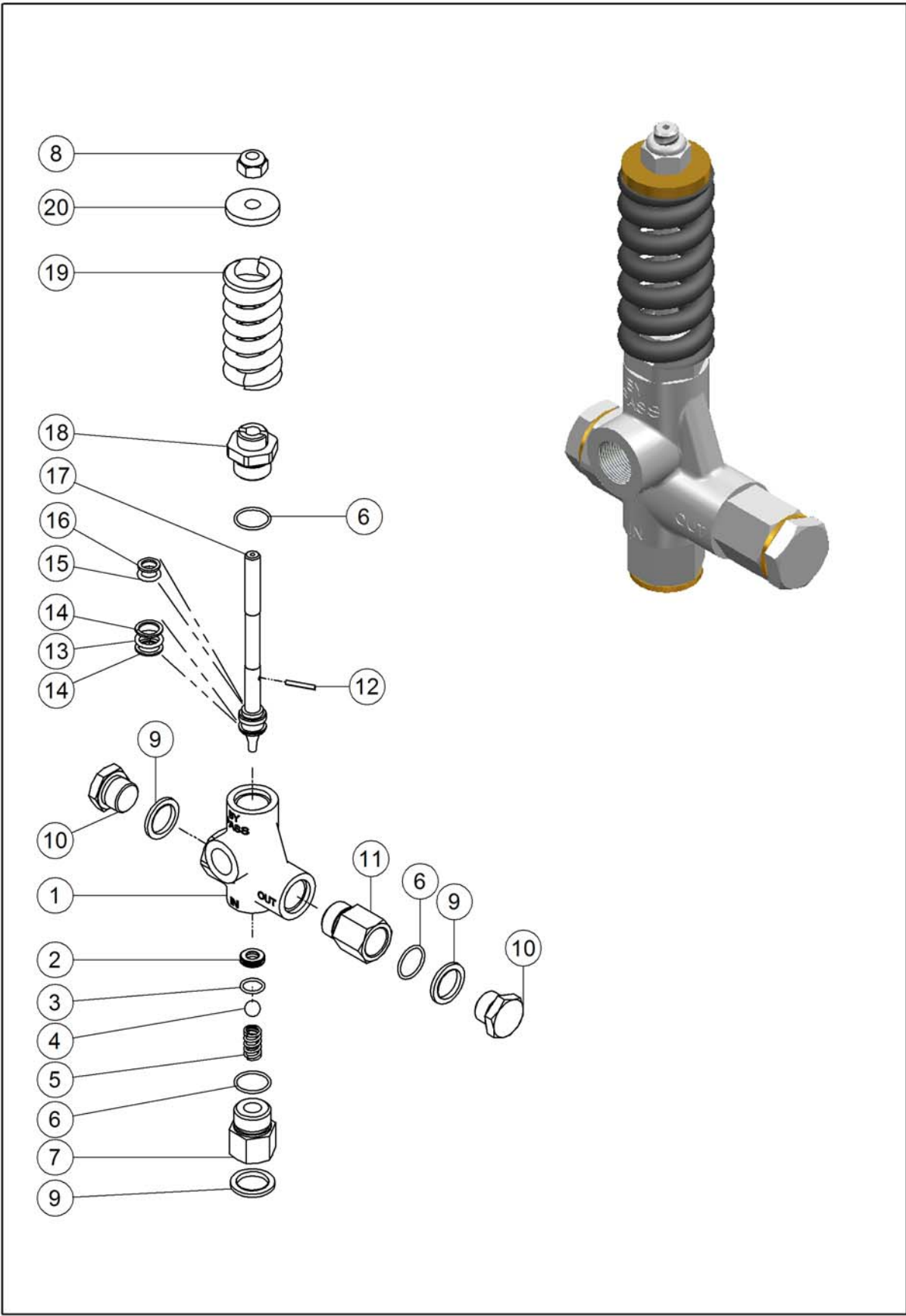
CD100-300/500 SERIES WATER-BLASTER POWER END SPARE-PARTS ASSEMBLY



**CD100-300/500 SERIES WATER-BLASTER
POWER END SPARE-PARTS LIST**

Pos.	Item No.	Qty.	Description
1	80100383	8	SCREW
2	81200365	2	SIGHT GLASS
3	81201004	1	BACK COVER POWER END
4	80100591	4	SCREW
5	81201005	1	PUMP FOOT BRACKET "A"
6	81201006	2	POSITIONING PIN
7	81201007	1	PUMP FOOT BRACKET "B"
8	81200990	1	KEY
9	81201008	1	CRANK SHAFT
10	80400611	1	BEARING CRANKSHAFT CLOSED END
11	80200752	1	O-RING
12	81201009	1	SIDE COVER CLOSED END
13	80500617 +80500429	1	PLUG + BONDED SEAL
14	N/A	N/A	N/A
15	80100659	8	WASHER
16	80400612	1	BEARING CRANKSHAFT GEAR-BOX END
17	81201010	1	GEAR-BOX HOUSING
18	81201011	6	POSITIONING PIN
19	80100778	8	SCREW
20	81201012	1	RING GEAR WHEEL
21	81201013	1	COVER GEAR WHEEL
22	80100779	1	WASHER
23	80100780	1	SCREW
24	80400613	1	INNER BEARING PINION GEAR AXLE
25	81201014	1	PINION GEAR AXLE
26	81200991	1	KEY
27	80400614	1	OUTER BEARING PINION GEAR AXLE
28	81201015	1	COVER GEAR BOX
29	80200354	1	O-RING
30	81201016	1	SIDE COVER PINION AXLE
31	80200751	1	OIL SEAL RING
32	80100782	1	CIR-CLIP
33	80100781	6	SCREW
34	81201017	1	CRANK CASE
35	80500893	6	PLUG
36	81200349	1	OIL FILLER BREATHER
37	81201018	2	COVER FOR CROSS-HEADS
38	80100382	8	SCREW
39	80200595	3	OIL SEAL
40	80200651	3	O-RING
41	81201019	3	OIL SEAL HOLDER
42	80100783	3	CIR-CLIP
71	80100786	6	CONNECTING ROD TIE BOLT (Torque 50 Nm)
72	81200939	3	SHELL BEARING SET
73	81200998	3	CONNECTING ROD
74	80100787	6	CIR CLIP
75	81200999	3	WRIST PIN
76	81201000	3	WRIST PIN BUSHING
77	81200985	3	CROSS HEAD
78	81201001	3	WASHER WIPER
1-78	81200754	1	POWER END COMPLETE

**CD100-300&500 SERIES WATER-BLASTER
SAFETY VALVE SPARE-PARTS ASSEMBLY**



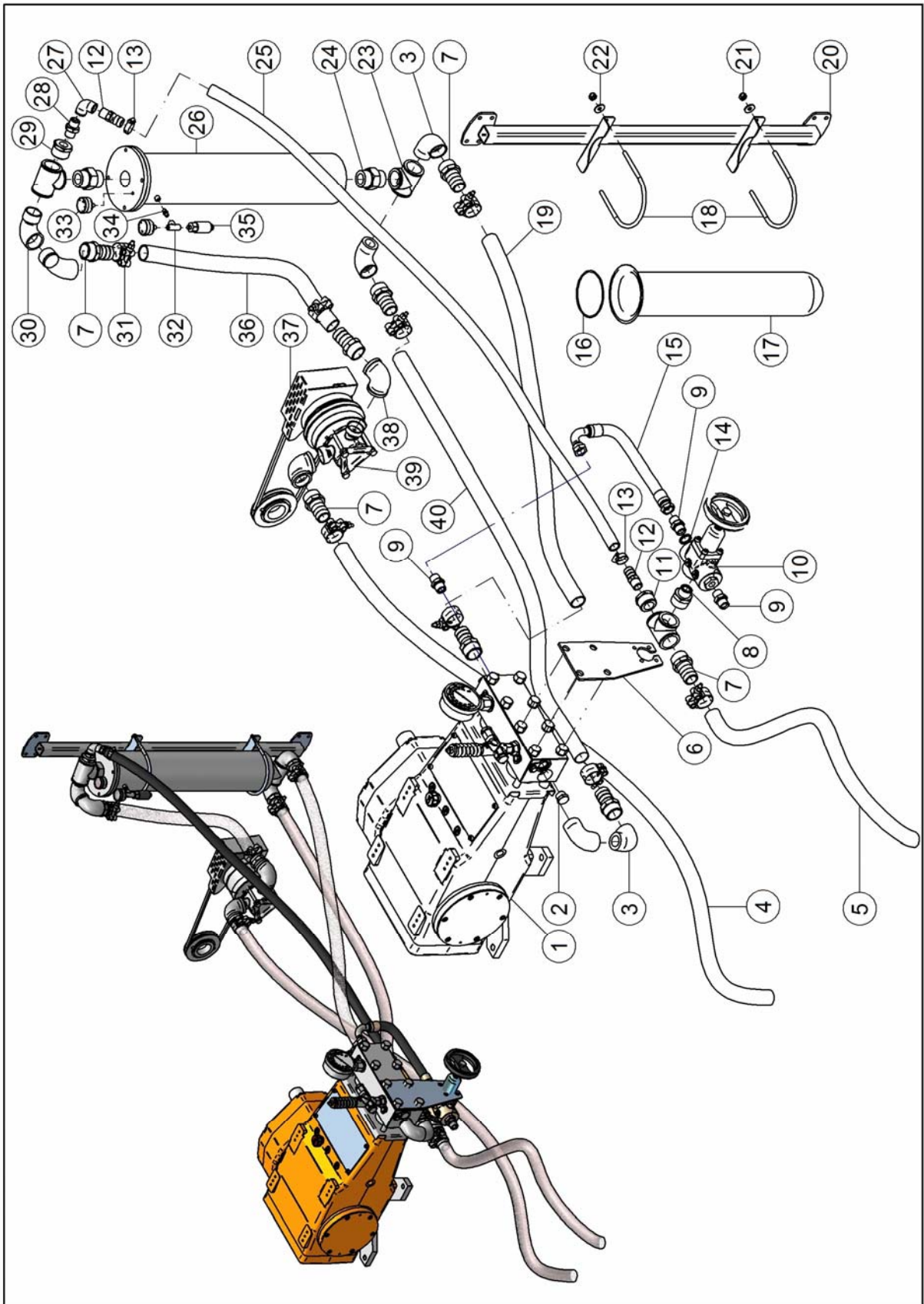
**CD100-300&500 SERIES WATER-BLASTER
SAFETY VALVE SPARE-PARTS LIST**

Pos.	Item No.	Qty.	Description
1	81300676	1	VALVE HOUSING
2	81300595	1	VALVE SEAT Part of safety valve rep. kit (81300554)
3	80200597	1	O-RING Part of safety valve rep. kit (81300554)
4	81300559	1	BALL Part of safety valve rep. kit (81300554)
5	80300555	1	SPRING
6	80200599	3	O-RING Part of safety valve rep. kit (81300554)
7	80500692	1	ADAPTOR
8	80100259	1	LOCK NUT
9	80500429	3	BONDED SEAL
10	80500617	2	PLUG
11	81300289	1	OUTLET FITTING
12	81300551	1	PIN
13	80200606	1	O-RING Part of safety valve rep. kit (81300554)
14	80200605	2	BACK UP RING Part of safety valve rep. kit (81300554)
15	80200598	1	O-RING Part of safety valve rep. kit (81300554)
16	80200604	1	BACK UP RING Part of safety valve rep. kit (81300554)
17	81300548	1	PISTON
18	81300292	1	PISTON HOUSING
19	80300549	1	SPRING
20	81300550	1	SPRING GUIDE

SAFETY VALVE REPAIR KIT

Item No./Kit Description	Pos.	Item No.	Qty.	Description
81300554 REP. KIT SAFETY VALVE	2	81300595	1	VALVE SEAT
	3	80200597	1	O-RING
	4	81300559	1	BALL
	6	80200599	3	O-RING
	13	80200606	1	O-RING
	14	80200605	2	BACK UP RING
	15	80200598	1	O-RING
	16	80200604	1	BACK UP RING

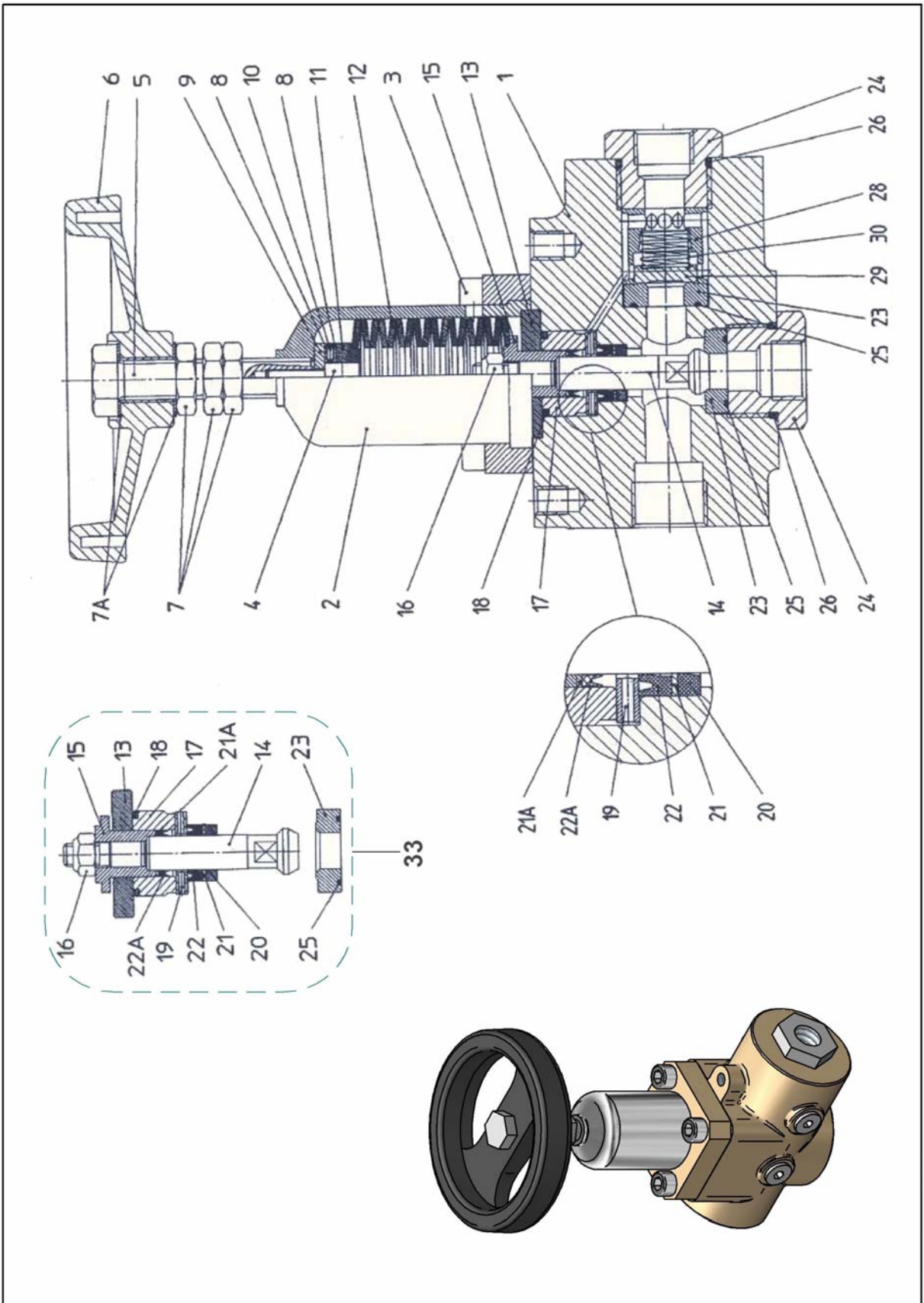
**CD100-300&500 SERIES WATER-BLASTER
WATER SYSTEM SPARE-PARTS ASSEMBLY**



**CD100-300&500 SERIES WATER-BLASTER
WATER SYSTEM SPARE-PARTS LIST**

Pos.	Item No.	Qty.	Description
1	81201260	1	PUMP
2	80500496	1	PLUG
3	80500672	4	ELBOW
4	83400618	10m	HOSE SUCTION
5	83400618	2m	HOSE
6	81001617	1	BRACKET UNLOADER CD100-300
7	80500729	8	HOSE NIPPLE
8	80500809	1	NIPPLE
9	80500849	3	NIPPLE
10	81300704	1	UNLOADER (see details page 37)
11	80500854	1	BUSHING
12	80500695	2	HOSE NIPPLE
13	80100527	2	HOSE CLIPS
14	80500974	1	BONDED SEAL
15	81401750	1	HOSE
16	80200653	1	O-RING
17	81000821	1	FILTER BAG (disposable)
18	80101159	2	U-BOLT
19	83400618	1,5m	HOSE
20	81001777	1	BRACKET FOR FILTER
21	80100710	4	LOCK NUT
22	80100906	4	WASHER
23	80500943	3	TEE
24	80500944	2	NIPPLE
25	83400658	2m	HOSE
26	81000813	1	FILTER HOUSING
27	80501025	1	ELBOW
28	80500931	1	NIPPLE WITH RESTRICTOR
29	80500682	1	BUSHING
30	80500807	2	ELBOW
31	80100756	8	HOSE CLIP
32	80501029	1	TEE
33	81300631	2	GAUGE
34	80500675	1	NIPPLE
35	81100844	1	PRESSURE SWITCH
36	83400622	1,5m	HOSE WITH NETTING
37	81001399	1	GUARD BOOSTER PUMP
38	80500728	2	ELBOW
39	N/A	1	BOOSTER PUMP SYSTEM
40	83400618	1,5m	HOSE

**CD100-300&500 SERIES WATER-BLASTER
UNLOADER SPARE-PARTS ASSEMBLY**



**CD100-300&500 SERIES WATER-BLASTER
UNLOADER SPARE-PARTS LIST**

Pos.	Item No.	Qty.	Description
	81300704		UNLOADER
1	*	1	CASING
2	*	1	SPRING GUIDE
3	*	4	INNER HEXAGON SCREW
4	80100902	1	INNER HEXAGON SCREW
5	81300799	1	STUD BOLT
6	81300862	1	HAND WHEEL
7	*	1	HEXAGON NUT
7A	*	3	DISC
8	81300867	2	DISC
9	81300826	2	BEARING PART 1
10	81300827	1	AXIAL BEARING
11	81300828	1	BEARINGS PART 2
12	80101023	18	BELLEVILLE WASHER (PLATE SPRING)
13	*	1	CENTERING DISC Part of piston unit rep. kit (81300706)
14	*	1	PISTON Part of piston unit rep. kit (81300706) Part of unloader rep. kit (81300705)
15	*	1	SEAL SUPPORT Part of piston unit rep. kit (81300706) Part of unloader rep. kit (81300705)
16	*	1	HEXAGON NUT Part of piston unit rep. kit (81300706) Part of unloader rep. kit (81300705)
17	*	1	CYLINDER Part of piston unit rep. kit (81300706)
18	*	1	O-RING Part of piston unit rep. kit (81300706) Part of unloader rep. kit (81300705)
19	*	1	SPACER RING Part of piston unit rep. kit (81300706)
20	*	1	GUIDE RING Part of piston unit rep. kit (81300706)
21	*	1	SUPPORT RING Part of piston unit rep. kit (81300706) Part of unloader rep. kit (81300705)
21A	*	1	SUPPORT RING Part of piston unit rep. kit (81300706) Part of unloader rep. kit (81300705)
22	*	1	GROOVED SEAL RING Part of piston unit rep. kit (81300706) Part of unloader rep. kit (81300705)
22A	*	1	GROOVED SEAL RING Part of piston unit rep. kit (81300706) Part of unloader rep. kit (81300705)
23	*	2	VALVE SEAT Part of piston unit rep. kit (81300706) Part of unloader rep. kit (81300705)
24	*	2	VALVE PLUG
25	*	2	O-RING Part of piston unit rep. kit (81300706) Part of unloader rep. kit (81300705)
26	*	2	O-RING Part of unloader rep. kit (81300705)
28	*	1	SPACER PIPE
29	*	1	VALVE PLATE Part of unloader rep. kit (81300705)
30	*	1	VALVE SPRING Part of unloader rep. kit (81300705)
	*	4	STOP PLUG (not shown in drawing)
	*	4	COPPER GASKET (not shown in drawing)
33	81300706	1	PISTON UNIT ASSY
	81300705		REPAIR KIT

* Cannot ordered separately

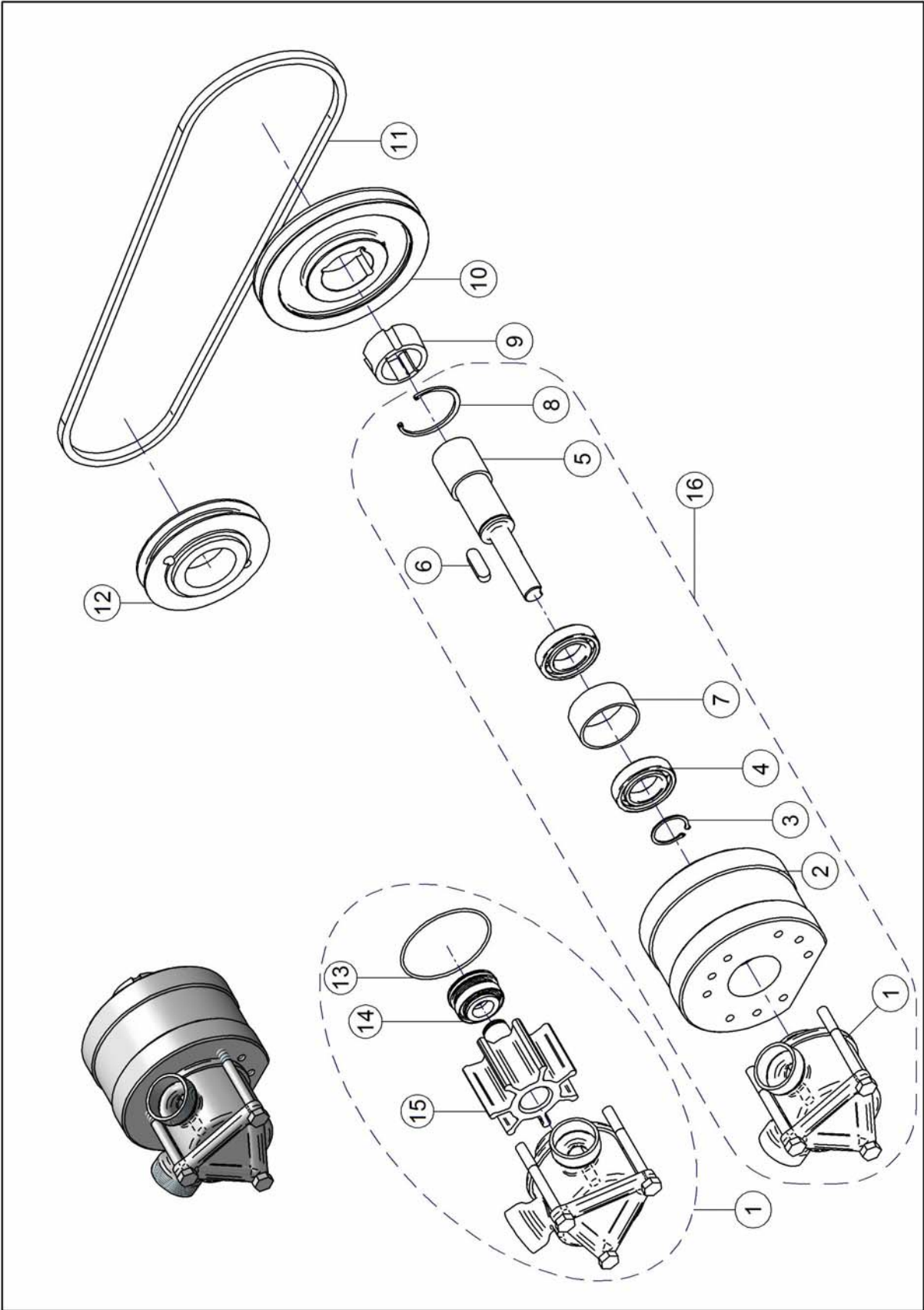
UNLOADER REPAIR KIT

Item No./Kit Description	Pos.	Item No.	Qty.	Description
81300705 UNLOADER OVERHAUL REP. KIT	14	*	1	PISTON
	15	*	1	SEAL SUPPORT
	16	*	1	HEXAGON NUT
	18	*	1	O-RING
	21	*	1	SUPPORT RING
	21A	*	1	SUPPORT RING
	22	*	1	GROOVED SEAL RING
	22A	*	1	GROOVED SEAL RING
	23	*	2	VALVE SEAT
	25	*	2	O-RING
	26	*	2	O-RING
	29	*	1	VALVE PLATE
30	*	1	VALVE SPRING	

Item No./Kit Description	Pos.	Item No.	Qty.	Description
81300706 PISTON UNIT ASSY. REP. KIT	13	*	1	CENTRING DISC
	14	*	1	PISTON
	15	*	1	SEAL SUPPORT
	16	*	1	HEXAGON NUT
	17	*	1	CYLINDER
	18	*	1	O-RING
	19	*	1	SPACER RING
	20	*	1	GUIDE RING
	21	*	1	SUPPORT RING
	21A	*	1	SUPPORT RING
	22	*	1	GROOVED SEAL RING
	22A	*	1	GROOVED SEAL RING
	23	*	1	VALVE SEAT
	25	*	1	O-RING

* Cannot ordered separately

**CD100-300&500 SERIES WATER-BLASTER
BOOSTER PUMP SPARE-PARTS ASSEMBLY**



**CD100-500 SERIES WATER-BLASTER
BOOSTER PUMP SPARE-PARTS LIST**

Pos.	Item No.	Qty.	Description	
1	81201251	1	BOOSTER PUMP	Part of booster pump assembly (81201718)
2	81001107	1	BELL HOUSING	Part of booster pump assembly (81201718)
3	80100764	1	CIRCLIP	Part of booster pump assembly (81201718)
4	80400604	2	BEARING	Part of booster pump assembly (81201718)
5	81001106	1	AXLE ADAPTOR	Part of booster pump assembly (81201718)
6	81100602	1	KEY	Part of booster pump assembly (81201718)
7	81000833	1	BUSHING	Part of booster pump assembly (81201718)
8	80100765	1	CIRCLIP	Part of booster pump assembly (81201718)
9	81000268	1	TAPER BUSH	
10	81000808*	1	PULLY	
11	81001333	1	V-BELT	
12	81000807*	1	PULLY	
13	80200844	1	O-RING RUBBER IMPELLER	Part of booster pump (81201251)
14	80200842	1	MECH.SEAL- IMPELLER PUMP	Part of booster pump (81201251)
15	81201340	1	RUBBER IMPELLER	Part of booster pump (81201251)
16	81201718	1	BOOSTER PUMP ASSEMBLY WITH BEARING HOUSING	

**CD100-300 SERIES WATER-BLASTER
BOOSTER PUMP SPARE-PARTS LIST**

Pos.	Item No.	Qty.	Description	
1	81201251	1	BOOSTER PUMP	Part of booster pump assembly (81201718)
2	81001107	1	BELL HOUSING	Part of booster pump assembly (81201718)
3	80100764	1	CIRCLIP	Part of booster pump assembly (81201718)
4	80400604	2	BEARING	Part of booster pump assembly (81201718)
5	81001106	1	AXLE ADAPTOR	Part of booster pump assembly (81201718)
6	81100602	1	KEY	Part of booster pump assembly (81201718)
7	81000833	1	BUSHING	Part of booster pump assembly (81201718)
8	80100765	1	CIRCLIP	Part of booster pump assembly (81201718)
9	81000268	1	TAPER BUSH	
10	81000807*	1	PULLY	
11	81001333	1	V-BELT	
12	81000808*	1	PULLY	
13	80200844	1	O-RING RUBBER IMPELLER	Part of booster pump (81201251)
14	80200842	1	MECH.SEAL- IMPELLER PUMP	Part of booster pump (81201251)
15	81201340	1	RUBBER IMPELLER	Part of booster pump (81201251)
16	81201718	1	BOOSTER PUMP ASSEMBLY WITH BEARING HOUSING	

