



CP-20 WATER BLASTER
200 Bar
Sea Water
Petrol (Gasoline) Driven Unit
With Unloader

USER GUIDE &
SPARE-PART BOOK



RTH Renders Technischer Handel
Böttcherweg 27
25355 Barmstedt

Telefon: +49 4122 - 55 444
Mobil: +49 172 - 411 30 90
Fax: +49 4122 - 95 38 64

Thank you for choosing our water blaster. For your safety and correct operation, please carefully read the information and instructions in this manual before use.

NOTE: All of the information stated in this manual is based on data available at the time of printing. DEN-JET reserves the right to modify or change its products and / or specification data at any time without prior notice.

DEN-JET has no responsibility or liability regarding misuse of the product or use of the product with third party products.

DEN-JET warranty's is limited to repair or replacement of faulty items at the time of manufacture.

DEN-JET has the copyright for this material and all kinds of reproduction are prohibited without DEN-JET's permission.

JULY 2014

Model:	CP-20-200
Technical details:	
W.P. Bar / Psi Flow Lpm / Gpm	170 / 2465 45 / 12
Engine Spec. Motor Hp/ Kw	22hp
Dimensions L x W x H mm Weight Kg	1100 x 740 x 1000 152

Index:

- General information
 - Specification data 2
 - Index 3
 - Certificate(s) of conformity 4
 - Safety precautions 5-6
 - Medical emergency information 7

- Set-up & Use
 - Preparing for use, Operation of the machine 8
 - Safety devices 9
 - Set-up & Use 9
 - Check 9

- Maintenance
 - Lubrication 10
 - Cleaning 10
 - Storage 10

- Spare-part lists
 - Main Spare-part assembly 11-12
 - Water System 13-14
 - Pump CP20- 200 Spare-part assembly 15-17
 - Gear Box Spare-part assembly 18
 - Water gun 19-22
 - Sand blasting equipment 23-24

Certificate of E.U conformity:

DEN-JET Nordic A/S
Terndrupvej 7, Astrup
DK-9510 Arden
Denmark

According to E.U. Machine Directive 2006/42/EC. Appendix IIA

We hereby declare that the petrol (gasoline) driven high-pressure water blaster machines [CP20-200] has been designed, manufactured and tested to fully comply with the health and safety requirements of the E.U. machine regulations.

ANY modification or change of the machine without our prior consent will render this declaration null and void.

Appropriate E.U. regulations: E.U. Machine Directive (2006/42/EC) Current issue.
 E.U. Low Voltage Directive (2006/95/EC)
 E.U. EMC Directive (2004/108/EC).

Coordinated standards
Used particularly:

EN 809	pr EN 1889
EN 292 part 1 & 2	EN 60204-1
EN 574	EN 294
	EN 50081-2
	EN 6100-6-2

Date: JULY. 2014

Benny S. Jensen

Managing Director.

Safety Precautions:

To safeguard the operator who uses the machine and its accessories and as accident prevention and protection of bystanders and property, the following safety precautions must be observed. Always treat the water blaster in the same way as any other power driven high speed cutting tool!

Never let children or people who have not been properly instructed operate the machine.

Use the electric plug in a proper socket with ground to earth wiring. The entire electrical installation must be with earth wiring! All electrical installations must be made only by an electrician. A GFCI (Residual current device) is recommended.

Always keep the high-pressure cleaner and the belonging accessories in good working condition. Check that the machine and its accessories are free from defects, and in good working condition, with special attention to the insulation on the electric cable. In case of defect: Do NOT OPERATE THE MACHINE! Get the machine serviced.

Eye protection must be worn at all times when operating the machine to protect against repelling or ricocheting materials hitting the eyes and causing damage.

Ear protection must be worn at all times when operating the machine to protect against hear loss during operation.

Proper footwear and protective clothing must be worn at all times when using the equipment to avoid and prevent damage to the operator.

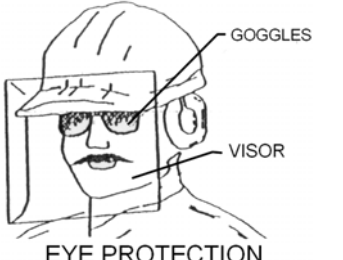
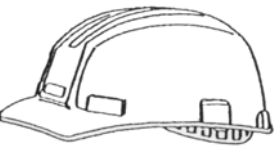

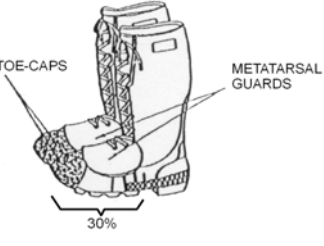

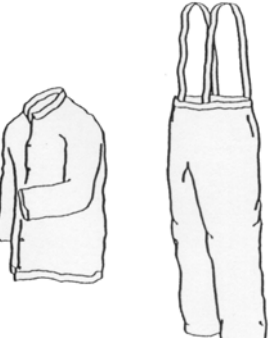
NEVER direct the jet at yourself. Do not attempt to clean your clothes or footwear with the machine.

Precautions must be made to keep bystanders away from the working range.
NEVER spray-jet on humans or live animals, the high pressure jet can cause severe injury.

NEVER spray at electrical equipment, or at the machine itself.
Make sure the machine is turned off and disconnected from the main power supply before service or repair.

Safety Precautions:

The below shown protective clothing and devices should be worn both by personnel operating the water blaster system and equipment and by those working nearby:

 <p>EYE PROTECTION</p>	<p>Operators must wear visors or goggles to guard against spray and flying debris. A combination of both goggles and visor is recommended. It will protect the eyes and the face during both water-blasting as well as abrasive water-blasting.</p>
 <p>HEAD PROTECTION</p>	<p>Safety helmets must be worn at all time by personnel within the work area. Helmet material must be able to withstand mechanical shock exceeding 10G in 8ms without fracturing.</p>
 <p>HAND PROTECTION</p>	<p>Shear proof gloves must be worn by the operator at all times. A glove combination of a cloth inner lining and a water tight outer layer is preferable.</p>
 <p>FOOT PROTECTION</p>	<p>Safety boots with steel toecaps minimum 0.5mm (0.02”) thick must be worn. The toecap must cover at least 30% of the footwear length. Basic safety footwear must also be equipped with metatarsal guards to protect the instep. Safety boots are available in numerous designs.</p>
 <p>HEARING PROTECTION</p>	<p>Operators and other personnel exposed to noise levels of more than 90-dBa for more than 1 hour must wear suitable ear protection. Ear plugs or ear muffs are usually sufficient.</p>
 <p>PROTECTIVE CLOTHING</p>	<p>Waterproof clothes protect the operator only from spray and flying debris. They do NOT deflect direct jet impact. Therefore, an operator must take care never to point a water-jet either at them selves or other personnel.</p>

Medical emergency information:

Immediate medical attention should be given to personnel who sustain equipment related injuries while operating the system. In such cases, it is vital that medical personnel be apprised of all facts relevant to such injuries. Therefore, all operating personnel should be provided with waterproof emergency medical alert tags or cards, describing the nature of their work and the possibility of injury inherent in the use of water jetting equipment. The below example of a standard card can be printed out or photo copied, bend, laminated and used as medical alert tag.

MEDICAL ALERT

This card is to be carried by personnel working with high-pressure water jetting equipment. Obtain medical treatment immediately for ANY high-pressure water-jet injuries.



This person has been working with water jetting at pressures up to 55,000 psi (374Mpa, 3,740bar, 3,867 kg/cm²) with a jet velocity of up to 3,000 fps (914 mps). This should be taken into account during diagnosis. Unusual infections with microaerophilic organisms occurring at lower temperatures have been reported. These may be gram-negative pathogens such as found in sewage. Bacterial swabs and blood cultures may therefore be helpful. A local poison control centre should be contacted for additional treatment information and advise.



DEN-JET Nordic A/S

Terndrupvej 7, Astrup, DK-9510 Arden, Denmark
Tel: +45 98 55 88 68 Fax: +45 98 55 88 18 www.denjet.com

Preparing the machine for operation:

1) Place the machine in a safe location and secure the unit with lashing belts.

2) Freshwater Connection.

Prepare the water supply for the blaster, by attaching a 3/4" hose to the supplied low pressure inlet coupling on the side of the water tank. Connect the other end to the **fresh water** supply from the vessel. Open for the water supply and fill up the water tank before starting the machine. Always use the inlet connection on the tank for supplying water.

3) High Pressure Hose Connection

Mount the 1/2" high pressure hose to the blaster by attaching the swivel of the hose to the outlet fitting of the pump head. Please use 2 x 27mm spanners / wrenches to tighten the connection. Additional high pressure hoses supplied with the machine should be mounted now by using the supplied 1/2" nipples male-male to connect the hoses together. Please use 2 x 27mm spanners / wrenches to tighten the connection.

4) Trigger Gun Connection

Mount the trigger gun with lance to the high pressure hose. Please use 2 x 27mm spanners / wrenches to tighten the connection. Mount the correct nozzle at the end of the lance.

5) Machine is now ready for operation.

Operation of the Machine:

A) Ensure that the water supply is open.

B) Turn START key – machine starts.

Allow the machine to idle a few minutes.

C) Get a firm grip with both hands on the trigger gun handle and lance handle. Press the trigger and start blasting. Always be aware of other crew members in your working area – Safety is first priority.

Note: Do NOT let the machine run idle for more than 10 minutes, as it may cause damage to the pump. (water heats up).

Shut-down of the Machine:

A) Press the red STOP button – machine stops.

B) Squeeze the trigger gun to release the pressure inside the high pressure hose.

C) Turn off the water supply.

Storage of machine during Winter time.

Store the machine in a frost free location.

Drain the water from the machine and flush the pump with anti-freeze fluid.

The machine is equipped with the following safety devices:

a) Key starter shut down the unit when turned to 0.

b) Safety valve. The safety valve built onto the top of the pump is protecting against over-pressure (pos.55 page 15)

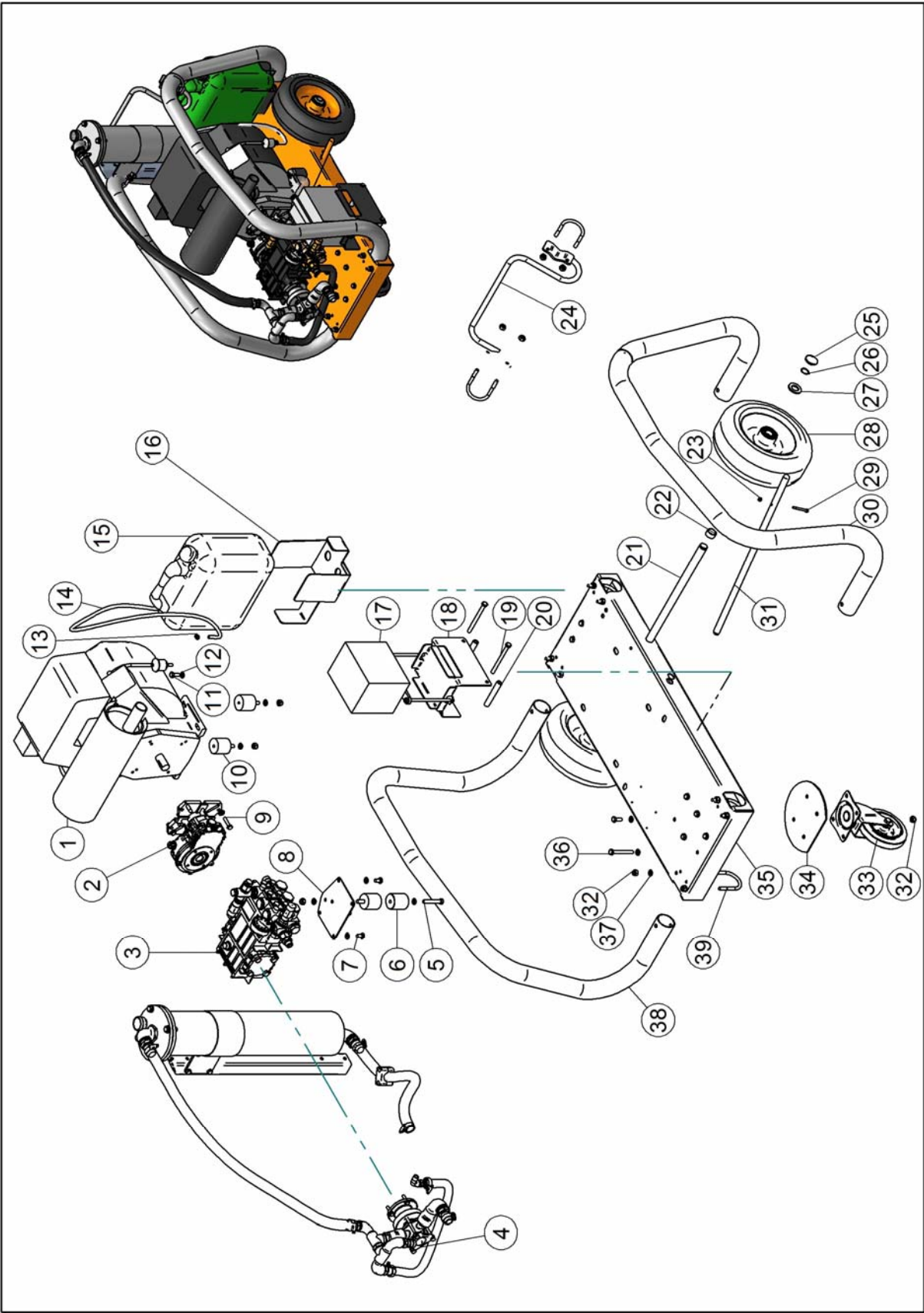
Set-Up & Use:

Check	Task
Daily Inspection	<p><i>Check the strainer.</i> Clean if necessary. <i>Check the oil level on the crankcase of the pump, gearbox and engine.</i> Fill up if necessary. <i>Check high pressure connections for leakage.</i> NEVER tighten connections under pressure. <i>Check high pressure hoses e</i> <i>Check the air intake grill of the engine radiator.</i> Clean for dust if necessary.</p>
	<p>Notice: To prevent damage to hoses, avoid letting the high-pressure hoses rub against sharp edges for example manholes or getting squeezed in door openings etc. Replace if necessary.</p>
	<p>Inlet water must have positive pressure and its temperature must be below 50°C (112°F)</p>

Maintenance:

Maintenance	Task
Lubrication	<p><i>Oil renewal on the pump crankcase and gear box is to be completed the first time after no more than 50 hours of use. Oil renewal is hereafter to be completed in every 400 hours of use. Or at least one time a year.</i></p> <p><i>For Pump and Engine use a SAE 30 or 10W40 Oil (part number: 83600870)</i></p> <p><i>For Gearbox use a SAE 75W90 Oil (part number: 83600854)</i></p> <p><i>Quantity: 1,04 Liter for pump, 0,5 Liter for the gearbox.</i></p> <p><i>Fill up until the oil level is visible in the sight glass.</i></p> <p><i>Oil renewal for the engine to be completed after 100 hours of use. Oil renewal is hereafter to be completed in every 400 hours of use. Or at least one time a year.</i></p>
Renewal of oil	<p>Switch off the machine. Loosen the oil drain screw on the lower back of the pump crank-case. Let the oil drain out into a waste oil-tray. Remount the oil drain screw and pour in new oil through the oil inlet on top of the pump until visible in the oil sight glass.</p> <p>Notice: Always dispose of the used oil in a proper manner.</p>
Cleaning	<p><i>A part of keeping the machine and its accessories in good working condition is keeping it clean. But NEVER clean the machine itself with high-pressure. Do not use solvents.</i></p>
Storage	<p><i>Keep the unit frost free, or flush the pump thoroughly with non alcoholic antifreeze fluid.</i></p>

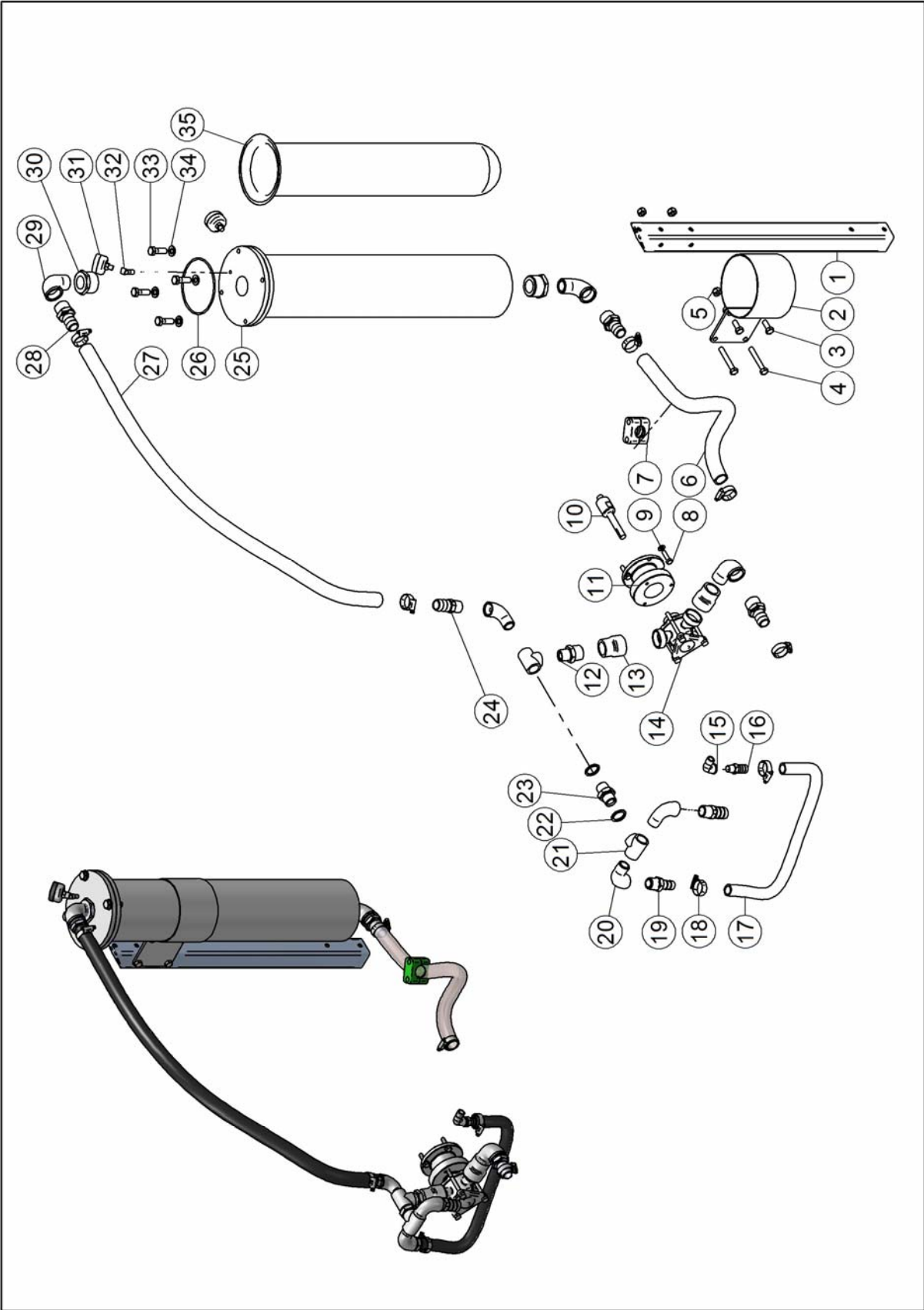
**CP20-200 WATER-BLASTER
MAIN SPARE-PARTS ASSEMBLY**



**CP20-200 WATER-BLASTER
MAIN SPARE-PARTS LIST**

Pos.	Item No.	Qty.	Description
1	81100839	1	ENGINE PETROL
2	81000713	1	GEAR BOX
3	81201376	1	PUMP 200 BAR
4		1	WATER SYSTEM CP20 SEA WATER
5	80100598	1	SCREW
6	81001231	1	DISTANCE BUSHING
7	80100648	3	SCREW
8	81001230	1	BRACKET PUMP HOLDER
9	80100759	4	SCREW
10	81000940	3	RUBBER FOOT
11	80100258	6	SCREW
12	80100506	17	WASHER
13	80100904	1	HOSE CLIP
14	83400625	1	HOSE RUBBER
15	81000939	1	PETROL CAN GREEN
16	81001232	1	BRACKET FUEL CAN HOLDER CP20
17	81100956	1	BATTERY
18	81000744	1	BRACKET FOR BATTERY
19	80101004	2	SCREW
20	83000596	2	DISTANCE BUSHING L 100mm
21	81000621	1	AXLE
22	81000623	2	BUSHING
23	80100053	1	LOCK NUT
24	81000447	1	CABLE HOLDER
25	81000619	2	HUB-CAP STAR LOCK
26	80100669	2	CIRCLIP
27	80100668	2	WASHER
28	81000618	2	WHEEL
29	80100254	1	SCREW
30	81000248	1	LEFT FRAME
31	81000251	1	MECHANICAL BRAKE
32	80100259	14	LOCK NUT
33	81000235	1	CASTOR WHEEL
34	81000445	1	SUPPORT
35	81000242	1	BASE PLATE
36	80100379	4	SCREW
37	80100310	10	WASHER
38	81000249	1	RIGHT FRAME
39	80100617	6	U-BOLT
N/A	81001153	1	OIL FILTER ENGINE

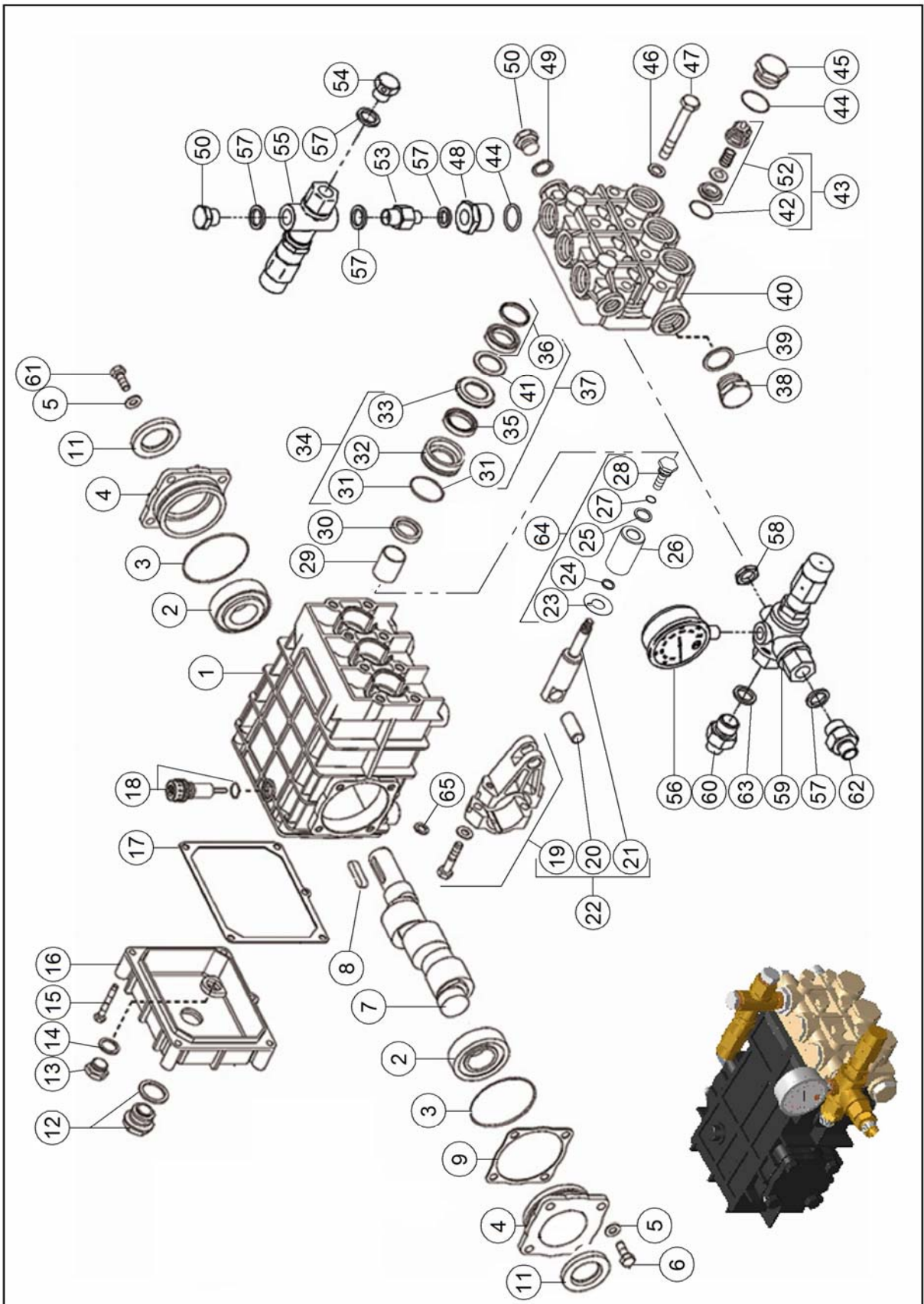
**CP20-200 WATER BLASTER
WATER SYSTEM SPARE-PARTS ASSEMBLY**



**CP20-200 WATER BLASTER
WATER SYSTEM SPARE-PARTS LIST**

Pos.	Item No.	Qty.	Description
1	81001335	1	FILTER HOLDER
2	81000837	1	BRACKET FOR BAG FILTER HOUSING
3	80100848	2	SCREW
4	80101002	2	SCREW
5	80100710	4	LOCK NUT
6	83400524	1M	HOSE SUCTION
7	80100661	1	CLAMP
8	80100171	4	SCREW
9	80100606	4	WASHER
10	81001112	1	AXLE ADAPTOR BOOSTER PUMP-PUMP
11	81001111	1	BELL HOUSING
12	80500260	1	NIPPLE
13	80501199	2	SOCKET
14	81201250	1	BOOSTER PUMP RUBBER IMPELLER
15	80501047	1	ELBOW
16	80501242	1	HOSE NIPPLE
17	83400599	1M	HOSE RUBBER
18	80100527	7	HOSE CLIPS
19	80500436	1	HOSE NIPPLE
20	80500437	3	ELBOW
21	80500673	2	TEE
22	80500600	2	BONDED SEAL
23	80500931	1	NIPPLE WITH RESTRICTOR
24	80500695	2	HOSE NIPPLE
25	81000813	1	FILTER HOUSING
26	80200653	1	O-RING
27	83400681	1.5M	HOSE RUBBER
28	80500227	3	HOSE NIPPLE
29	80500237	3	ELBOW
30	80500854	2	BUSHING
31	81300631	2	GAUGE
32	80501503	1	ELBOW
33	80100168	4	SCREW
34	80100799	4	WASHER
35	81000821	1	FILTER BAG

CP20-200 WATER BLASTER PUMP SPARE-PARTS ASSEMBLY



**CP20-200 WATER BLASTER
PUMP SPARE-PARTS LIST**

Pos.	Item No.	Qty.	Description
1	81200631	1	CRANK CASE
2	80400506	2	BEARING
3	80200407	2	O-RING
4	81200633	2	FLANGE OPEN
5	80100170	8	WASHER
6	80100603	4	SCREW Torque: 25Nm / 19 lb _r •ft
7	81201140	1	CRANK SHAFT
8	81200629	1	KEY
9	81200632	1	SHIM
10	N/A		
11	81200635	2	OIL SEAL
12	81200626	1	OIL LEVEL GLASS
13	81200625	1	DRAIN PLUG Torque: 11Nm / 8 lb _r •ft
14	81200624	1	GASKET
15	80100604	5	SCREW Torque: 11Nm / 8 lb _r •ft
16	81200623	1	CRANCK CASE COVER
17	81200622	1	GASKET
18	81200621	1	OIL BREATHER
19	81200636	3	CONNECTING ROD Torque: 30Nm / 22 lb _r •ft Part of connecting rod kit 81201355 (pos.22)
20	81200637	3	WRIST PIN Part of connecting rod kit 81201355 (pos.22)
21	81201354	3	CROSS HEAD Part of connecting rod kit 81201355 (pos.22)
22	81201355	1	CONNECTING ROD ASSEMBLY
23	81201356	3	PLUNGER DISC Part of plunger rep. kit 81201224 (pos.64)
24	81201357	3	RING Part of plunger rep. kit 81201224 (pos.64)
25	80100877	3	BACK-UP RING Part of plunger rep. kit 81201224 (pos.64)
26	81201211	3	PLUNGER SLEEVE
27	80200625	3	O-RING Part of plunger rep. kit 81201224 (pos.64)
28	81201358	3	PLUNGER SCREW Torque: 20Nm / 15 lbf•ft Part of plunger rep. kit 81201224 (pos.64)
29			GUIDE BEARING part of crank case pos.1 cannot be ordered separately
30	81201359	3	OIL SEAL
31	80200799	3	O-RING Part of seal rep. kit 81201217 (pos.37) Part of back up ring rep. kit 81201214 (pos.34)
32	81201212	3	BRASS RING Part of back up ring rep. kit 81201214 (pos.34)
33	81201213	3	BACK UP RING Part of back up ring rep. kit 81201214 (pos.34)
34	81201214	1	BACK UP RING KIT
35	81201215	3	LOW PRESSURE SEAL Part of seal rep. kit 81201217 (pos.37)
36	81201216	3	HIGH PRESSURE SEAL KIT Part of seal rep. kit 81201217 (pos.37)
37	81201217	1	SEAL KIT COMPLETE
38	80500496	1	PLUG Torque: 140Nm / 103 lbf•ft
39	80500974	1	WASHER
40	81201218	1	PUMP HEAD
41	81201219	3	WASHER Part of seal rep. kit 81201217 (pos.37)
42	80200855	6	O-RING Part of valve rep. kit 81201360 (pos.43)
43	81201360	1	VALVE ASSEMBLY rep. kit
44	80200856	6	O-RING
45	81201221	5	VALVE PLUG Torque: 120Nm / 88 lb _r •ft
46	80100957	8	WASHER
47	80100958	8	SCREW Torque: 50Nm / 37 lb _r •ft

**CP20-200 WATER BLASTER
PUMP SPARE-PARTS LIST**

Pos.	Item No.	Qty.	Description
48	81200657	1	PLUG
49	80100878	1	WASHER
50	80501251	2	PLUG Torque: 80Nm / 60 lb _f •ft
51	N/A		
52	81201223	6	VALVE SUCTION & DISCHARGE Part of valve rep. kit 81201360 (pos.43)
53	80500615	1	NIPPLE
54	81300609	1	DUMP PLUG
55	81300599	1	SAFETY VALVE 350/400 BAR
56	81300621	1	GAUGE
57	80500605	5	BONDED SEAL
58	80100609	1	CONTRA NUT
59	81300600	1	UNLOADER 350/400 BAR
60	80500375	1	NIPPLE
61	80100171	4	SCREW Torque: 25Nm / 19 lb _f •ft
62	80500716	1	NIPPLE
63	80500429	1	BONDED SEAL
64	81201224	1	PLUNGER REP KIT W/O PLUNGER SLEEVE
65	80100879	6	WASHER

Item No./Kit Description	Pos.	Item No.	Qty.	Description
Pos. 22 81201355 / CONNECTING ROD KIT	19	81200636	3	CONNECTING ROD
	20	81200637	3	WRIST PIN
	21	81201354	3	CROSS HEAD

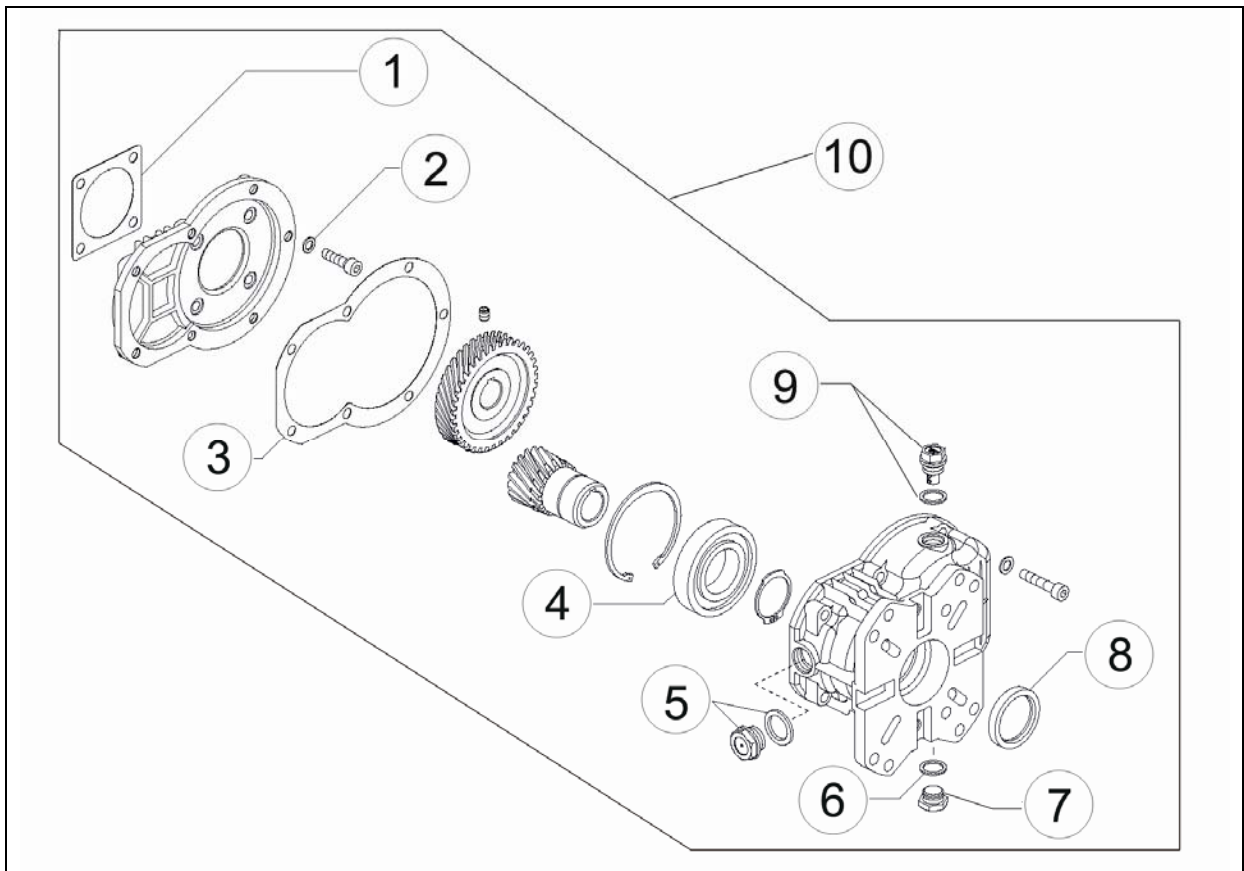
Item No./Kit Description	Pos.	Item No.	Qty.	Description
Pos. 34 81201214 / BACK UP RING REP. KIT	31	80200799	3	O-RING
	32	81201212	3	BRASS RING
	33	81201213	3	BACK UP RING

Item No./Kit Description	Pos.	Item No.	Qty.	Description
Pos. 37 81201217 / SEAL REP. KIT	31	80200799	3	O-RING
	35	81201215	3	LOW PRESSURE SEAL
	36	81201216	3	HIGH PRESSURE SEAL KIT
	41	81201219	3	WASHER

Item No./Kit Description	Pos.	Item No.	Qty.	Description
Pos. 43 81201360 / OUTLET VALVE REP. KIT	52	81201223	6	VALVE SUCTION & DISCHARGE
	42	80200855	6	O-RING

Item No./Kit Description	Pos.	Item No.	Qty.	Description
Pos. 64 81201224 PLUNGER REP. KIT W/O PLUNGER SLEEVE	23	81201356	3	PLUNGER DISC
	24	81201357	3	RING
	25	80100877	3	WASHER
	27	80200625	3	O-RING
	28	81201358	3	PLUNGER SCREW

**CP20-200 WATER BLASTER
GEAR-BOX SPARE-PARTS ASSEMBLY**



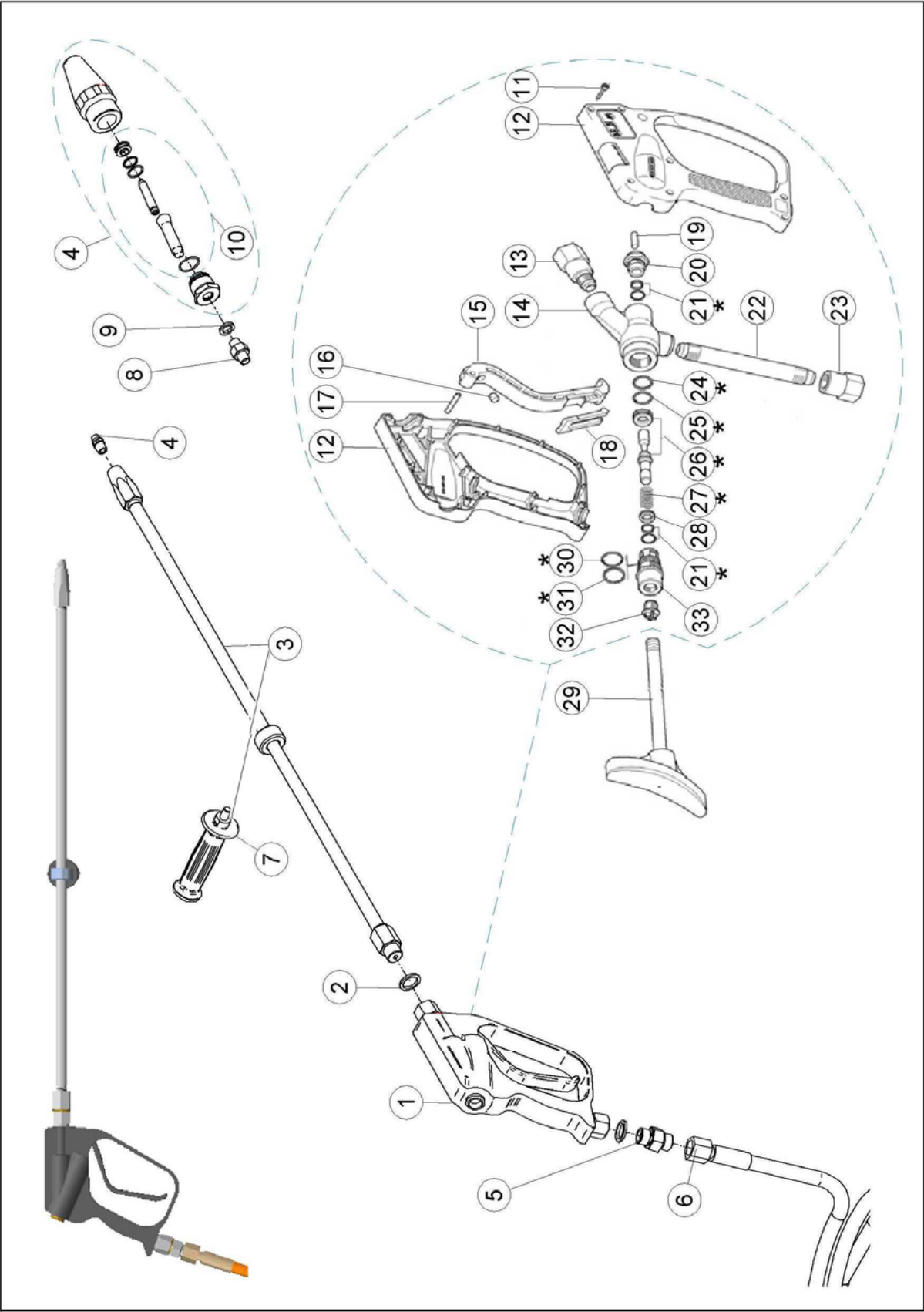
**CP20-200 WATER BLASTER
GEAR-BOX SPARE-PARTS LIST**

Pos.	Item No.	Qty.	Description
4	80400607	1	BEARING
5	81000846	1	SIGHT GLASS WITH PACKING
6	80100640	1	PACKING WASHER DRAIN SCREW
7	80500598	1	DRAIN SCREW
9	81200621	1	OIL FILLER CAP WITH PACKING
10	81000713	1	GEAR BOX COMPLETE (see pos. 23 page 11)

**CP20-200 WATER BLASTER
GEAR BOX SEAL KIT**

Item No./Kit Description	Pos.	Item No.	Qty.	Description
81000843 GEAR BOX SEAL KIT	1	81000845	1	GASKET PUMP HOUSING GEARBOX
	2	80500045	4	BONDED SEAL
	3	81000844	1	GASKET GEAR BOX
	6	80100640	1	PACKING DRAIN SCREW
	8	80200353	1	OIL SEAL

**DRY SHUT GUN 8KPSI
SPARE-PARTS ASSEMBLY**



**DRY SHUT GUN 8KPSI
SPARE-PARTS LIST**

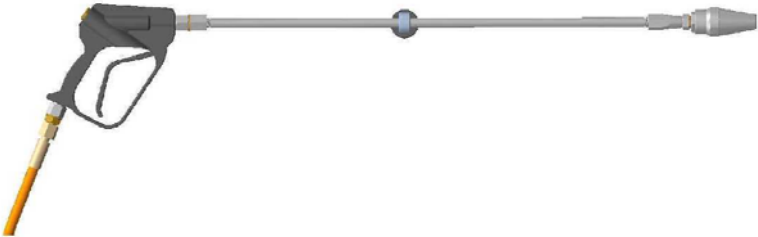
Pos.	Item No.	Qty.	Description
	81400895		GUN DRY SHUT WO (NOZZLE ,HOSE ,NIPPLE, SHOULDER REST)
1	81400860	1	TRIGGER HANDLE
2	80500429	2	BONDED SEAL
3	81400644	1	LANCE LONG 560BAR 1000mm
4	81501186	1	NOZZLE
5	80500375	1	NIPPLE
6	81400776		HOSE (H.P) 20m 1200 BAR W 1/2"BSPP SWIVEL
6	81400639		HOSE (H.P) 20m 1000 BAR W 1/2"BSPP SWIVEL
6	81400962		HOSE (H.P) 20m 500 BAR W 1/2"BSPP SWIVEL
7	81400075	1	SIDE HANDLE
8	80500654	1	NIPPLE
9	80500971	2	BONDED SEAL
10	N/A		
11	80100594	7	SCREW (Not available separately)
12	81400903	1	HOUSING SET (Not available separately)
13	81400902	1	OUTLET FITTING (Not available separately)
14	81400901	1	VALVE HOUSING (Not available separately)
15	81400906	1	TRIGGER (Not available separately)
16	81400905	1	STRIKER (Not available separately)
17	81400904	1	PIN (Not available separately)
18	81400907	1	SAFETY LATCH (Not available separately)
19	81400864	1	ACTUATOR ROD (Not available separately)
20	81400863	1	PLUG (Not available separately)
21	80200694	2	SEAL ASSY. Part of rep. kit 81400861
22	81400900	1	BACK PIPE (Not available separately)
23	81400899	1	INLET FITTING (Not available separately)
24	80200074	1	BACK UP RING Part of rep. kit 81400861
25	80200070	1	O-RING Part of rep. kit 81400861
26	81400898	1	PISTON-SEAT Part of rep. kit 81400861
27	80300613	1	SPRING Part of rep. kit 81400861
28	81400897	1	SPACER (Not available separately)
29	81400231	1	SHOULDER REST
30	80200601	1	O-RING Part of rep. kit 81400861
31	80200693	1	BACK UP RING Part of rep. kit 81400861
32	81400896	1	PLUG (Not available separately)
33	81400862	1	SPRING HOLDER (Not available separately)
*	81400861		REP. KIT FOR GUN 560BAR (Pos.21,24,25,26,27,30,31)

OPERATION PROCEDURE FOR ROTATING NOZZLE

OPERATION PROCEDURE FOR ROTATING NOZZLE

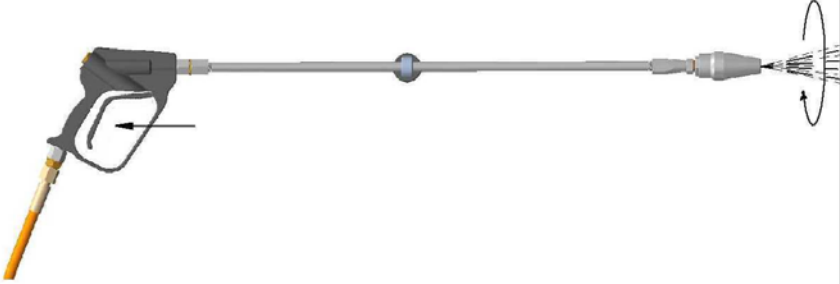
①

HOLD GUN UPRIGHT
NOZZLE FACING DOWN



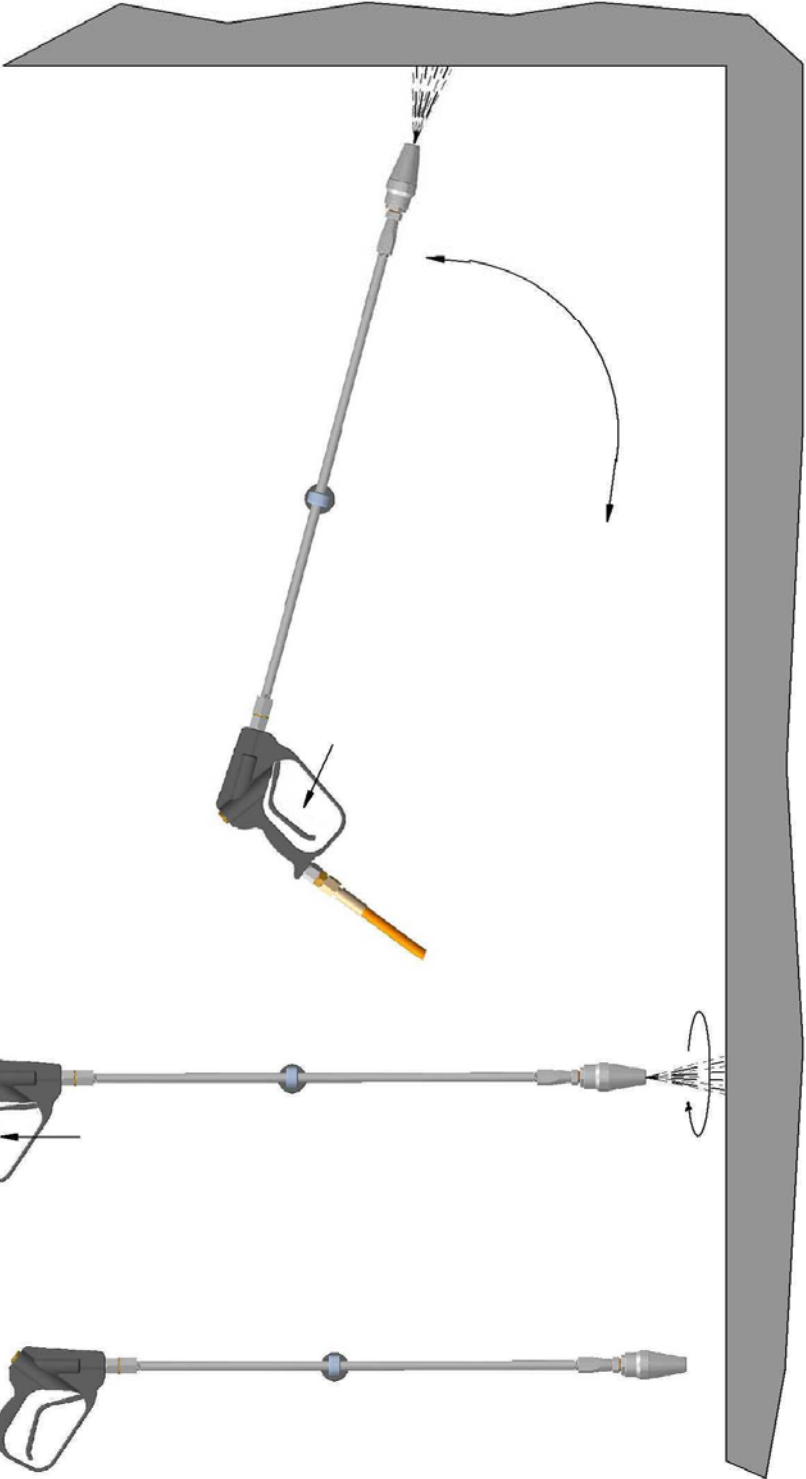
②

SQUEEZE TRIGGER
OBSERVE NOZZLE ROTATE

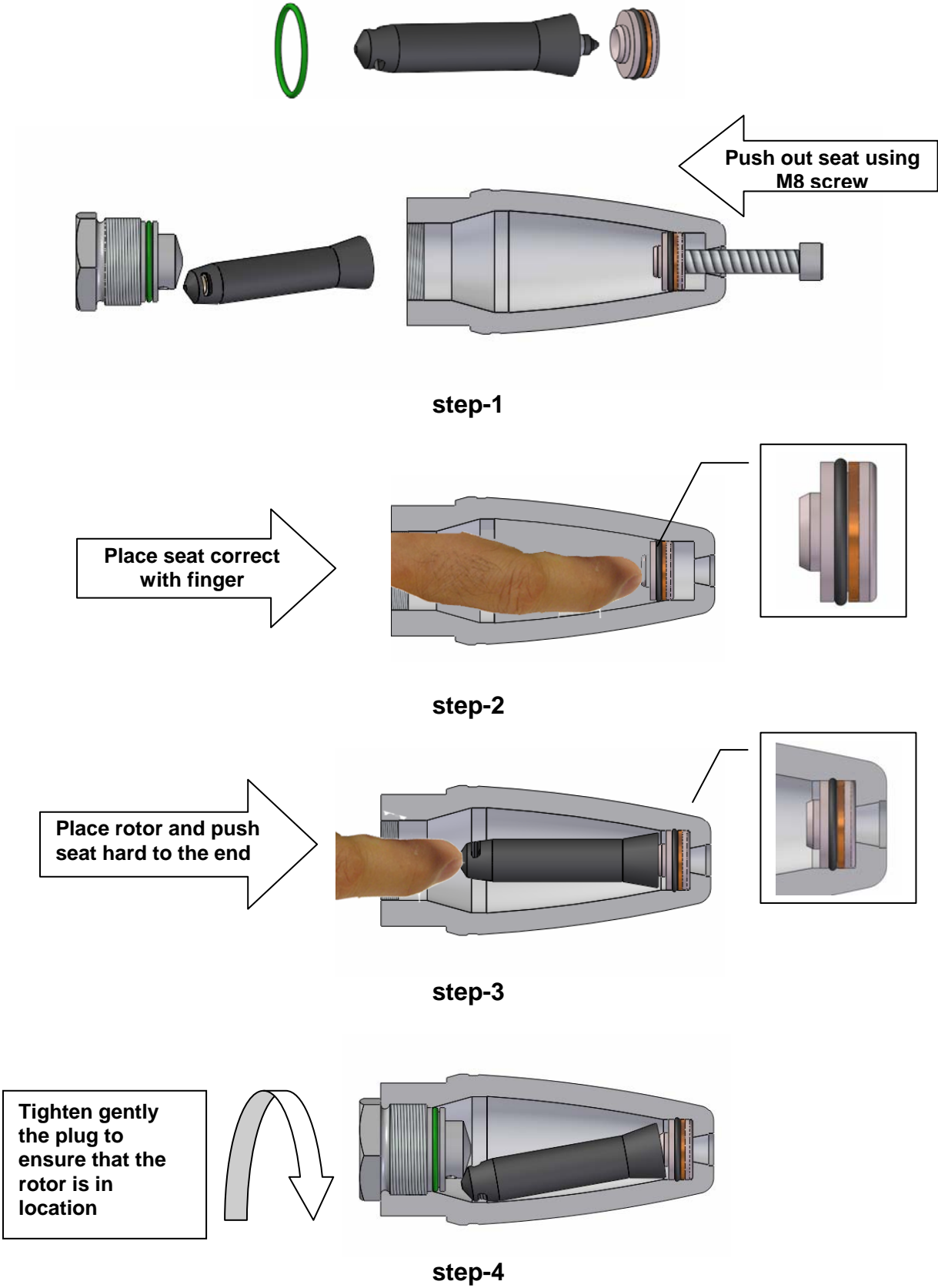


③

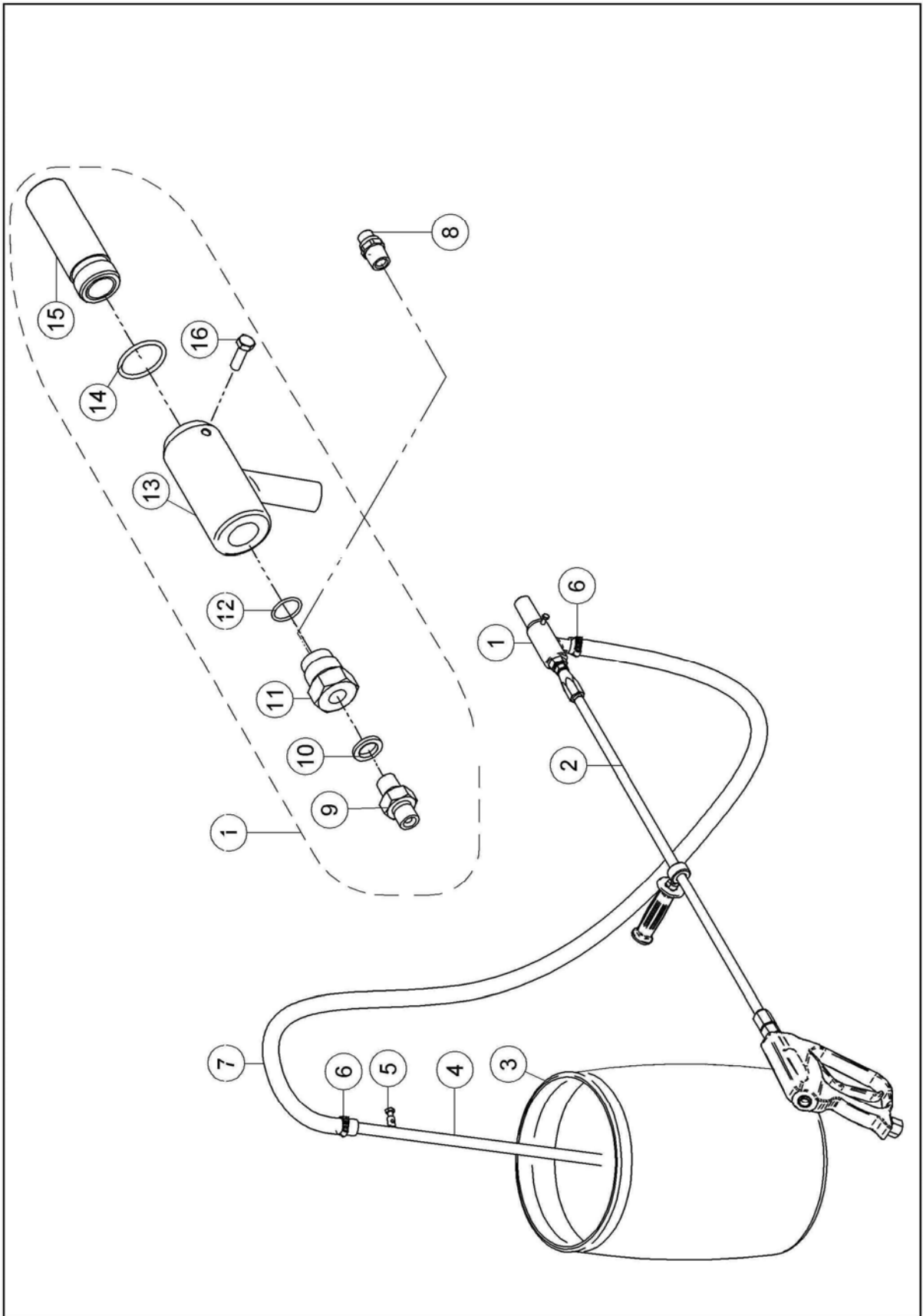
KEEP TRIGGER SQUEEZED
MOVE NOZZLE TO HORIZONTAL BLASTING POSITION



Rotating Nozzle Replacement Procedure Repair Kit



**SAND BLASTING EQUIPMENT 1/4" BSPP
SPARE PART ASSEMBLY**



**SAND BLASTING EQUIPMENT 1/4" BSPP
SPARE PART LIST**

Pos.	Item No.	Qty.	Description
1	81400643	1	VENTURI HOUSING COMPLETE FOR 1/4"BSPP FEMALE INLET
2			TRIGGER GUN (NOT INCLUDED)
3	81400641	1	GRIT CONTAINER 120 LITER W/ LID
4	81400629	1	POKER FOR SANDBLASTING EQUIP.
5	80100671	1	SCREW
	80100672	1	NUT
6	80100527	2	HOSE CLIPS
7	83400596	15m	HOSE
8		1	WATER NOZZLE SAND BLASTING
9	80500654	1	NIPPLE
10	80500971	1	BONDED SEAL
11	81400472	1	NOZZLE ADAPTOR 1/4"BSPP FOR VENTURI SAND BLASTER
12	80200057	1	O RING
13	81500469	1	VENTURI SANDBLASTING
14	80200397	1	O-RING
15	81500567	1	NOZZLE S.B BORON CARBIDE
16	80100385	1	SCREW
	81400654		SAND BLASTING KIT 1/4"BSPP W. POKER Pos.(1,4,5,6,7)

Blasting media:

If available, we recommend "Copper slag" 10/30 Grit (0,5mm to 1,8mm) as blasting media.
If using "Quarts sand", use a blend of 0,8mm – 1,8mm, do NOT use too fine sand, it will not flow and it does not give an efficient use of the equipment.