



CP-20 WATER BLASTER
500 Bar
Petrol (Gasoline) Driven Unit
With Unloader

USER GUIDE &
SPARE-PART BOOK



RTH Renders Technischer Handel
Böttcherweg 27
25355 Barmstedt

Telefon: +49 4122 - 55 444
Mobil: +49 172 - 411 30 90
Fax: +49 4122 - 95 38 64

Thank you for choosing our water blaster. For your safety and correct operation, please carefully read the information and instructions in this manual before use.

NOTE: All of the information stated in this manual is based on data available at the time of printing. DEN-JET reserves the right to modify or change its products and / or specification data at any time without prior notice.

DEN-JET has no responsibility or liability regarding misuse of the product or use of the product with third party products.

DEN-JET warranty's is limited to repair or replacement of faulty items at the time of manufacture.

DEN-JET has the copyright for this material and all kinds of reproduction are prohibited without DEN-JET's permission.

May 2005

Model:	CP-20-500
Technical details:	
W.P. Bar / Psi Flow Lpm / Gpm	500 / 7250 16 / 4.2
Engine Spec. Motor Hp/ Kw	22hp
Dimensions L x W x H mm Weight Kg	1100 x 740 x 880 175

- General information
 - Specification data 2
 - Index 3
 - Certificate(s) of conformity 4
 - Safety precautions 5-6
 - Medical emergency information 7

- Set-up & Use
 - Preparing for use, Operation of the machine 8
 - Safety devices 9
 - Set-up & Use 9
 - Check 9

- Maintenance
 - Lubrication 10
 - Cleaning 10
 - Storage 10

- Spare-part lists
 - Main Spare-part assembly 11-12
 - Water Tank assembly 13-14
 - Pump CP20-500 Spare-part assembly 15-18
 - Gear Box Spare-part assembly 19
 - Water gun 20-23
 - Sand blasting equipment 24-25

Certificate of E.U conformity:

DEN-JET Nordic A/S
Terndrupvej 7, Astrup
DK-9510 Arden
Denmark

According to E.U. Machine Directive 2006/42/EC. Appendix IIA

We hereby declare that the petrol (gasoline) driven high-pressure water blaster machines [CP20-500] has been designed, manufactured and tested to fully comply with the health and safety requirements of the E.U. machine regulations.

ANY modification or change of the machine without our prior consent will render this declaration null and void.

Appropriate E.U. regulations: E.U. Machine Directive (2006/42/EC) Current issue.
E.U. Low Voltage Directive (2006/95/EC)
E.U. EMC Directive (2004/108/EC).

Coordinated standards
Used particularly:

EN 809	pr EN 1889
EN 292 part 1 & 2	EN 60204-1
EN 574	EN 294
	EN 50081-2
	EN 6100-6-2

Date: Aug. 2011

Benny S. Jensen

Managing Director.

Safety Precautions:

To safeguard the operator who uses the machine and its accessories and as accident prevention and protection of bystanders and property, the following safety precautions must be observed. Always treat the water blaster in the same way as any other power driven high speed cutting tool!

Never let children or people who have not been properly instructed operate the machine.

Use the electric plug in a proper socket with ground to earth wiring. The entire electrical installation must be with earth wiring! All electrical installations must be made only by an electrician. A GFCI (Residual current device) is recommended.

Always keep the high-pressure cleaner and the belonging accessories in good working condition. Check that the machine and its accessories are free from defects, and in good working condition, with special attention to the insulation on the electric cable. In case of defect: Do NOT OPERATE THE MACHINE! Get the machine serviced.

Eye protection must be worn at all times when operating the machine to protect against repelling or ricocheting materials hitting the eyes and causing damage.

Ear protection must be worn at all times when operating the machine to protect against hear loss during operation.

Proper footwear and protective clothing must be worn at all times when using the equipment to avoid and prevent damage to the operator.

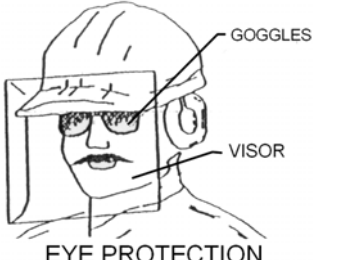
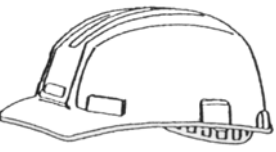

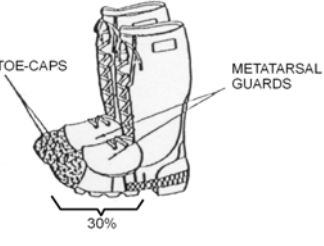

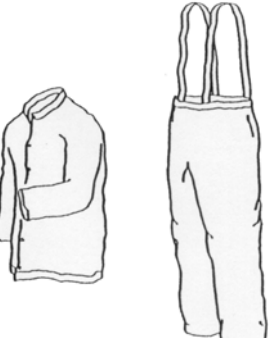
NEVER direct the jet at yourself. Do not attempt to clean your clothes or footwear with the machine.

Precautions must be made to keep bystanders away from the working range.
NEVER spray-jet on humans or live animals, the high pressure jet can cause severe injury.

NEVER spray at electrical equipment, or at the machine itself.
Make sure the machine is turned off and disconnected from the main power supply before service or repair.

Safety Precautions:

The below shown protective clothing and devices should be worn both by personnel operating the water blaster system and equipment and by those working nearby:

 <p>EYE PROTECTION</p>	<p>Operators must wear visors or goggles to guard against spray and flying debris. A combination of both goggles and visor is recommended. It will protect the eyes and the face during both water-blasting as well as abrasive water-blasting.</p>
 <p>HEAD PROTECTION</p>	<p>Safety helmets must be worn at all time by personnel within the work area. Helmet material must be able to withstand mechanical shock exceeding 10G in 8ms without fracturing.</p>
 <p>HAND PROTECTION</p>	<p>Shear proof gloves must be worn by the operator at all times. A glove combination of a cloth inner lining and a water tight outer layer is preferable.</p>
 <p>FOOT PROTECTION</p>	<p>Safety boots with steel toecaps minimum 0.5mm (0.02”) thick must be worn. The toecap must cover at least 30% of the footwear length. Basic safety footwear must also be equipped with metatarsal guards to protect the instep. Safety boots are available in numerous designs.</p>
 <p>HEARING PROTECTION</p>	<p>Operators and other personnel exposed to noise levels of more than 90-dBa for more than 1 hour must wear suitable ear protection. Ear plugs or ear muffs are usually sufficient.</p>
 <p>PROTECTIVE CLOTHING</p>	<p>Waterproof clothes protect the operator only from spray and flying debris. They do NOT deflect direct jet impact. Therefore, an operator must take care never to point a water-jet either at them selves or other personnel.</p>

Medical emergency information:

Immediate medical attention should be given to personnel who sustain equipment related injuries while operating the system. In such cases, it is vital that medical personnel be apprised of all facts relevant to such injuries. Therefore, all operating personnel should be provided with waterproof emergency medical alert tags or cards, describing the nature of their work and the possibility of injury inherent in the use of water jetting equipment. The below example of a standard card can be printed out or photo copied, bend, laminated and used as medical alert tag.

MEDICAL ALERT

This card is to be carried by personnel working with high-pressure water jetting equipment. Obtain medical treatment immediately for ANY high-pressure water-jet injuries.



This person has been working with water jetting at pressures up to 55,000 psi (374Mpa, 3,740bar, 3,867 kg/cm²) with a jet velocity of up to 3,000 fps (914 mps). This should be taken into account during diagnosis. Unusual infections with microaerophilic organisms occurring at lower temperatures have been reported. These may be gram-negative pathogens such as found in sewage. Bacterial swabs and blood cultures may therefore be helpful. A local poison control centre should be contacted for additional treatment information and advise.



DEN-JET Nordic A/S

Terndrupvej 7, Astrup, DK-9510 Arden, Denmark
Tel: +45 98 55 88 68 Fax: +45 98 55 88 18 www.denjet.com

Preparing the machine for operation:

1) Place the machine in a safe location and secure the unit with lashing belts.

2) Freshwater Connection.

Prepare the water supply for the blaster, by attaching a 3/4" hose to the supplied low pressure inlet coupling on the side of the water tank. Connect the other end to the **fresh water** supply from the vessel. Open for the water supply and fill up the water tank before starting the machine. Always use the inlet connection on the tank for supplying water.

3) High Pressure Hose Connection

Mount the 1/2" high pressure hose to the blaster by attaching the swivel of the hose to the outlet fitting of the pump head. Please use 2 x 27mm spanners / wrenches to tighten the connection. Additional high pressure hoses supplied with the machine should be mounted now by using the supplied 1/2" nipples male-male to connect the hoses together. Please use 2 x 27mm spanners / wrenches to tighten the connection.

4) Trigger Gun Connection

Mount the trigger gun with lance to the high pressure hose. Please use 2 x 27mm spanners / wrenches to tighten the connection. Mount the correct nozzle at the end of the lance.

5) Machine is now ready for operation.

Operation of the Machine:

A) Ensure that the water supply is open.

B) Turn START key – machine starts.

Allow the machine to idle a few minutes.

C) Get a firm grip with both hands on the trigger gun handle and lance handle. Press the trigger and start blasting. Always be aware of other crew members in your working area – Safety is first priority.

Note: Do NOT let the machine run idle for more than 10 minutes, as it may cause damage to the pump. (water heats up).

Shut-down of the Machine:

A) Press the red STOP button – machine stops.

B) Squeeze the trigger gun to release the pressure inside the high pressure hose.

C) Turn off the water supply.

Storage of machine during Winter time.

Store the machine in a frost free location.

Drain the water from the machine and flush the pump with anti-freeze fluid.

The machine is equipped with the following safety devices:

a) Key starter shut down the unit when turned to 0.

b) Safety valve. The safety valve built onto the top of the pump is protecting against over-pressure (pos. 1 -500 Bar Pump assembly).

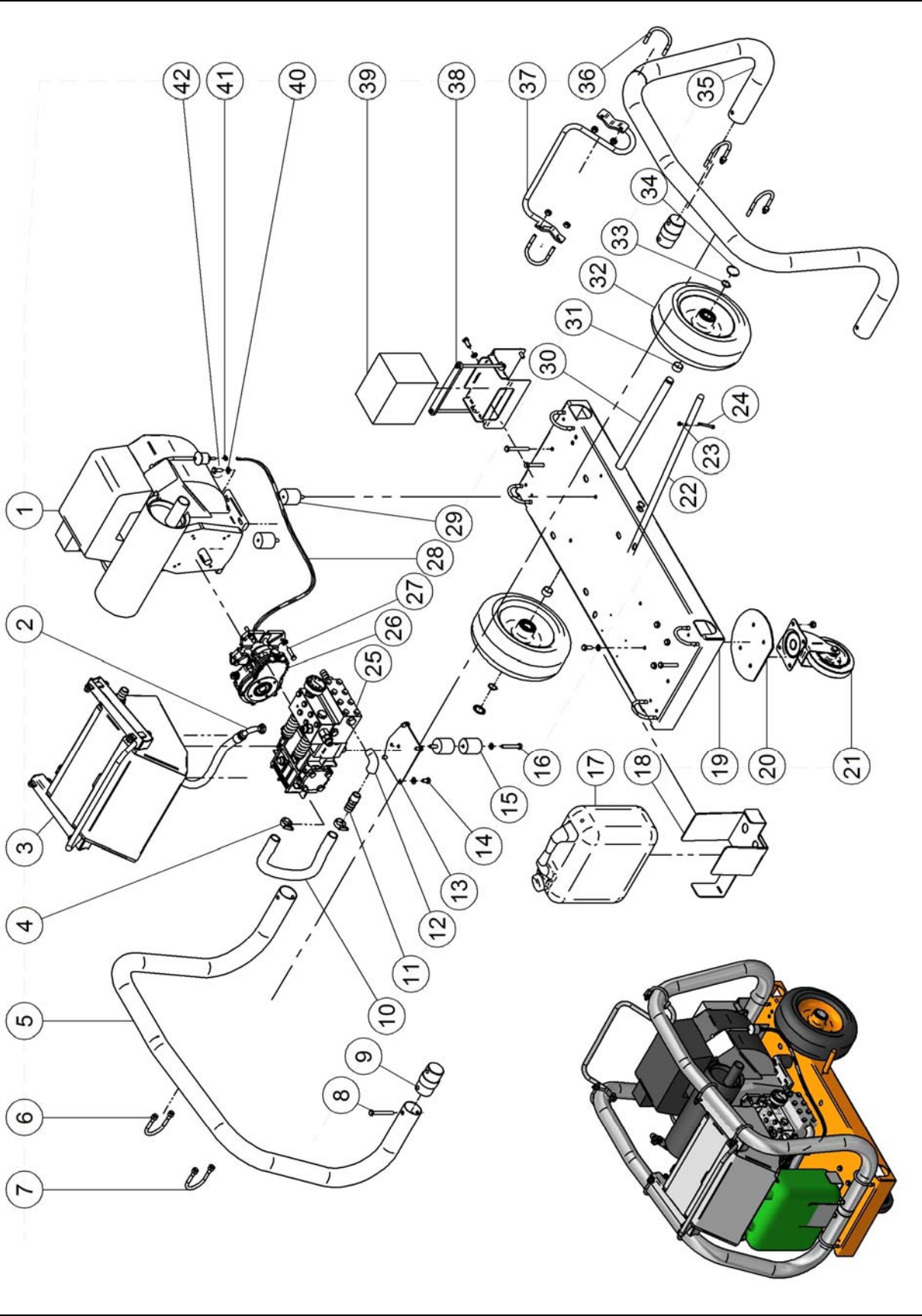
Set-Up & Use:

Check	Task
Daily Inspection	<p><i>Check the strainer.</i> Clean if necessary. <i>Check the oil level on the crankcase of the pump, gearbox and engine.</i> Fill up if necessary. <i>Check high pressure connections for leakage.</i> NEVER tighten connections under pressure. <i>Check high pressure hoses for wear and cracks.</i> Replace if necessary. <i>Check the air intake grill of the engine radiator.</i> Clean for dust if necessary.</p>
	<p>Notice: To prevent damage to hoses, avoid letting the high-pressure hoses rub against sharp edges for example manholes or getting squeezed in door openings etc. Replace if necessary.</p>
	Inlet water temperature must be below 60°C (140°F)

Maintenance:

Maintenance	Task
Lubrication	<p><i>Oil renewal on the pump crankcase and gear box is to be completed the first time after no more than 50 hours of use. Oil renewal is hereafter to be completed in every 400 hours of use. Or at least one time a year.</i></p> <p><i>For Pump and Engine use a SAE 30 or 10W40 Oil (part number: 83600870)</i></p> <p><i>For Gearbox use a SAE 75W90 Oil (part number: 83600854)</i></p> <p><i>Quantity: 1,04 Liter for pump, 0,5 Liter for the gearbox.</i></p> <p><i>Fill up until the oil level is visible in the sight glass.</i></p> <p><i>Oil renewal for the engine to be completed after 100 hours of use. Oil renewal is hereafter to be completed in every 400 hours of use. Or at least one time a year.</i></p>
Renewal of oil	<p>Switch off the machine. Loosen the oil drain screw on the lower back of the pump crank-case. Let the oil drain out into a waste oil-tray. Remount the oil drain screw and pour in new oil through the oil inlet on top of the pump until visible in the oil sight glass.</p> <p>Notice: Always dispose of the used oil in a proper manner.</p>
Cleaning	<p><i>A part of keeping the machine and its accessories in good working condition is keeping it clean. But NEVER clean the machine itself with high-pressure. Do not use solvents.</i></p>
Storage	<p><i>Keep the unit frost free, or flush the pump thoroughly with non alcoholic antifreeze fluid.</i></p>

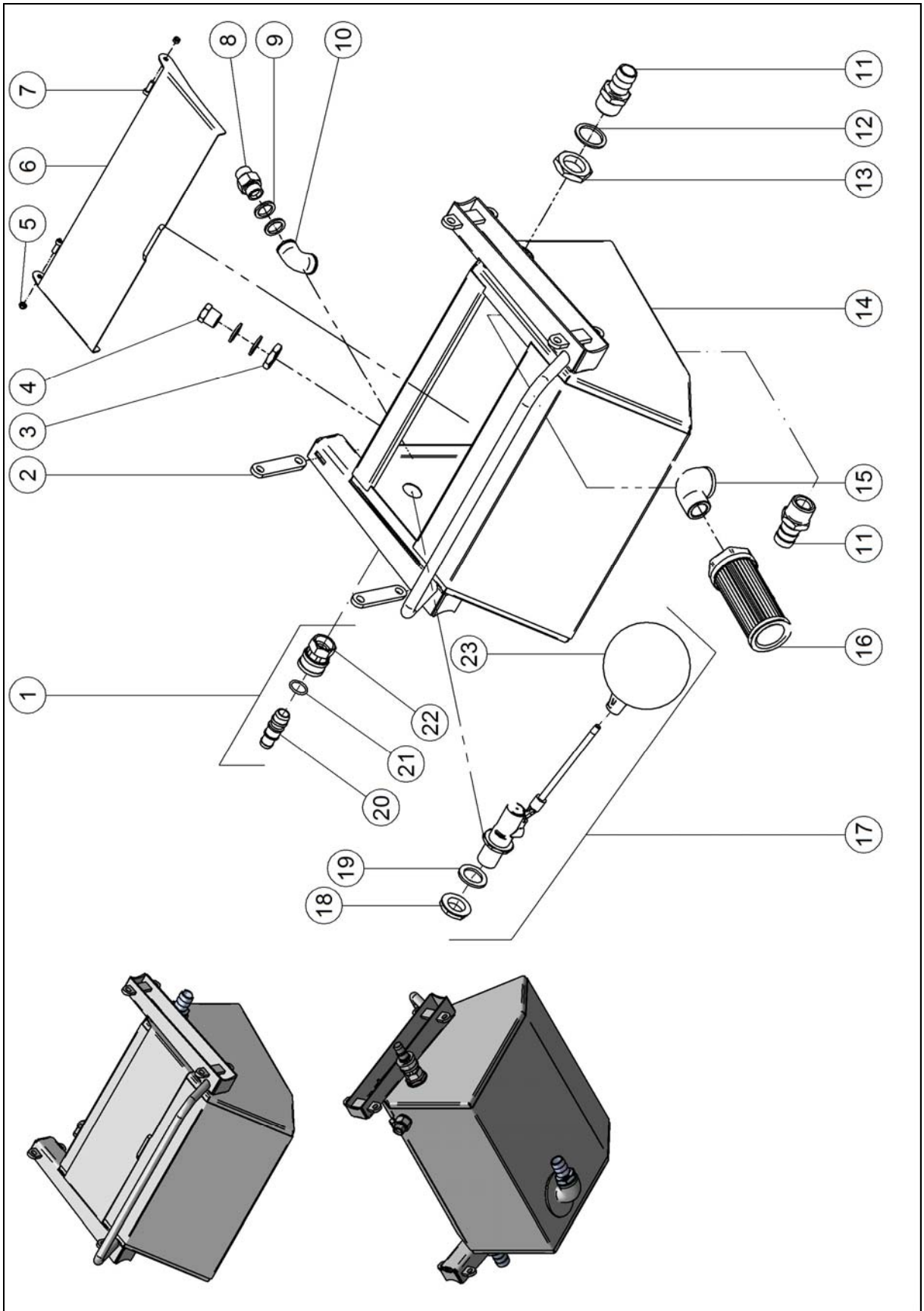
**CP20-500 WATER-BLASTER
MAIN SPARE-PARTS ASSEMBLY**



**CP20-500 WATER-BLASTER
MAIN SPARE-PARTS LIST**

Pos.	Item No.	Qty.	Description
1	81100839	1	ENGINE PETROL 22HP
2	81300594	1	HOSE DUMP BACK
3		1	WATER TANK CP20 COMPLETE
4	80100527	2	HOSE CLIPS
5	81000249	1	RIGHT FRAME
6	80100259	33	LOCK NUT
7	80100617	4	U-BOLT LONG
8	80100379	4	SCREW
9	81001229	2	ADAPTOR FRAME
10	83400524	0,5 m	HOSE SUCTION
11	80500695	1	HOSE NIPPLE
12	80500437	1	ELBOW
13	81001230	1	BRACKET PUMP HOLDER
14	80100648	4	SCREW
15	81001231	1	DISTANCE BUSHING
16	80100598	1	SCREW
17	81000939	1	PETROL CAN GREEN
18	81001232	1	BRACKET FOR PETROL CAN
19	81000242	1	BASE PLATE
20	81000445	1	SUPPORT CASTOR WHEEL
21	81000235	1	CASTOR WHEEL
22	81000251	1	MECHANICAL BRAKE
23	80100053	1	LOCK NUT
24	80100254	1	SCREW
25	81200639	1	PUMP
26	81000713	1	GEAR BOX
27	80100759	4	SCREW
28	83400624	1,5 m	RUBBER HOSE
29	81000940	3	RUBBER FOOT
30	81000621	1	AXLE
31	81000623	2	BUSHING
32	81000618	2	WHEEL
33	80100669	2	CIRCLIP
34	81000619	2	HUB-CAP STAR LOCK
35	81000248	1	LEFT FRAME
36	80100775	6	U-BOLT SHORT
37	81000447	1	CABLE HOLDER
38	81000744	1	BRACKET FOR BATTERY
39	81100956	1	BATTERY
40	80100506	34	WASHER
41	80100904	1	HOSE CLIP
42	80100258	8	SCREW
N/A	81001153	1	OIL FILTER ENGINE

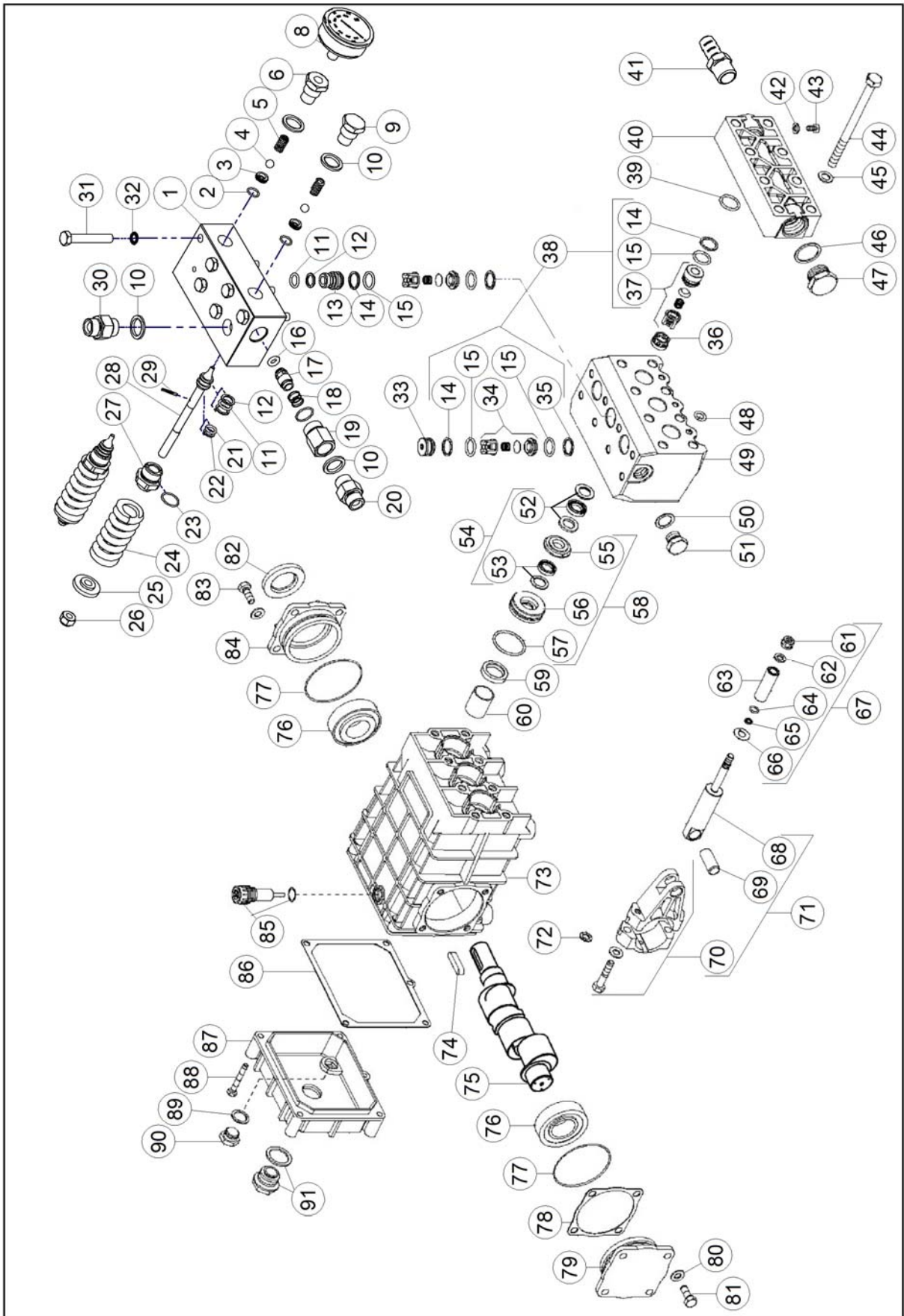
CP20-500 WATER BLASTER WATER TANK SPARE-PARTS ASSEMBLY



**CE20-500 WATER BLASTER
WATER TANK SPARE-PARTS LIST**

Pos.	Item No.	Qty.	Description
1	80500423	1	QUICK COUPLING
2	81000425	4	BRACKET FOR U BOLT
3	80100632	1	CONTRA NUT
4	80500495	1	PLUG
5	80100513	2	LOCK NUT
6	81000311	1	LID WATER TANK
7	80100605	2	SCREW
8	80500427	1	NIPPLE
9	80500429	4	BONDED SEAL
10	80500647	1	ELBOW
11	80500227	2	HOSE NIPPLE
12	80500975	1	BONDED SEAL
13	80100405	1	CONTRA NUT
14	81000941	1	WATER TANK WELDED
15	80500237	1	ELBOW
16	81000199	1	FILTER STRAINER
17	81000602	1	FLOAT VALVE COMPLETE
18	80100802	1	CONTRA NUT
19	80500974	1	BONDED SEAL
20	80500603	1	QUICK COUPLING HOSE NIPPLE
21	80200612	1	O-RING
22	80500604	1	QUICK COUPLING FEMALE
23	81000606	1	BALL

CP20-500 WATER BLASTER PUMP SPARE-PARTS ASSEMBLY



**CP20-500 WATER BLASTER
PUMP SPARE-PARTS LIST**

Pos.	Item No.	Qty.	Description
1	81300293	1	HOUSING UNLOADER
2	80200597	2	O-RING Part of rep. kit 81300619
3	81300595	2	VALVE SEAT Part of rep. kit 81300619
4	81300559	2	BALL Part of rep. kit 81300619
5	80300555	2	SPRING
6	81300597	1	PLUG GAUGE
7	N/A		
8	81300821	1	GAUGE
9	81300596	1	PLUG SPRING
10	80500429	4	BONDED SEAL
11	80200606	3	O-RING Part of rep. kit 81300619
12	80200605	5	BACK UP RING Part of rep. kit 81300619
13	81300598	1	CONNECTOR
14	80200611	6	BACK UP RING Part of valve kit 81200822 (pos.38)
15	80200608	9	O-RING Part of valve kit 81200822 (pos.38)
16	80200291	1	O-RING Part of rep. kit 81300619
17	81300290	1	CHECK VALVE
18	80300556	1	SPRING
19	81300289	1	OUTLET FITTING
20	80500375	1	NIPPLE
21	80200598	2	O-RING Part of rep. kit 81300619
22	80200604	2	BACK UP RING Part of rep. kit 81300619
23	80200599	3	O-RING Part of rep. kit 81300619
24	80300549	2	SPRING BLACK
25	81300550	2	SPRING GUIDE
26	80100259	2	LOCK NUT
27	81300292	2	PISTON HOUSING
28	81300548	2	PISTON
29	81300551	2	PIN
30	80500792	1	NIPPLE
31	80100598	6	SCREW Torque: 50Nm / 37 lbf•ft
32	80100599	6	SPRING WASHER
33	81200618	2	VALVE PLUG
34	81200712	3	DISCHARGE VALVE Part of valve kit 81200822 (pos.38)
35	80200840	3	BACK UP RING Part of valve kit 81200822 (pos.38)
36	81200609	3	SPACER
37	81200711	3	SUCTION VALVE Part of valve kit 81200822 (pos.38)
38	81200822	1	VALVE KIT
39	80200612	3	O-RING
40	81200613	1	INLET BLOCK
41	80500436	1	HOSE NIPPLE
42	80200609	1	WASHER
43	80100601	1	SCREW
44	80100602	8	SCREW Torque: 50Nm / 37 lbf•ft
45	80100599	8	SPRING WASHER
46	81200614	1	WASHER

**CP20-500 WATER BLASTER
PUMP SPARE-PARTS LIST**

Pos.	Item No.	Qty.	Description
47	81200615	1	PLUG Torque: 140Nm / 103 lb _f •ft
48	80200598	3	O-RING
49	81200608	1	PUMP HEAD
50	80500605	2	BONDED SEAL
51	80500598	2	PLUG Torque: 80Nm / 60 lb _f •ft
52	81200607	3	HIGH PRESSURE SEAL KIT Part of seal rep. kit 81200619 (pos.54)
53	81200605	3	LOW PRESSURE SEAL KIT Part of seal rep. kit 81200619 (pos.54)
54	81200619	1	SEAL KIT COMPLETE
55	81200606	3	BACK UP RING Part of back up ring rep. kit 81200634 (pos.58)
56	81200604	3	BRASS RING Part of back up ring rep. kit 81200634 (pos.58)
57	80200607	3	O-RING Part of back up ring rep. kit 81200634 (pos.58)
58	81200634	1	BACK UP RING KIT
59	81200603	3	OIL SEAL
60	81200903	3	GUIDE BEARING
61	81200630	3	PLUNGER NUT Torque: 15Nm / 11 lbf•ft Part of plunger rep. kit 81200704 (pos.67)
62	80100398	3	COPPER SEAL Part of plunger rep. kit 81200704 (pos.67)
63	81200616	3	PLUNGER SLEEVE
64	80200610	3	O-RING Part of plunger rep. kit 81200704 (pos.67)
65	81200601	3	RING Part of plunger rep. kit 81200704 (pos.67)
66	81200600	3	PLUNGER.DISC Part of plunger rep. kit 81200704 (pos.67)
67	81200704	1	PLUNGER REP KIT W/O PLUNGER SLEEVE
68	81200638	3	CROSS HEAD Part of connecting rod kit 81200599 (pos.71)
69	81200637	3	WRIST PIN Part of connecting rod kit 81200599 (pos.71)
70	81200636	3	CONNECTING ROD Torque: 30Nm / 22 lbf•ft Part of connecting rod kit 81200599 (pos.71)
71	81200599	3	CONNECTING ROD ASSEMBLY
72	80100879	6	WASHER
73	81200631	1	CRANK CASE
74	81200629	1	KEY
75	81200628	1	CRANKSHAFT 60 Hz.
76	80400506	2	BEARING
77	80200407	2	O-RING
78	81200632	1	SHIM
79	81200620	1	FLANGE CLOSED
80	80100170	8	WASHER
81	80100603	4	SCREW Torque: 25Nm / 19 lb _f •ft
82	81200635	1	OIL SEAL
83	80100171	4	SCREW Torque: 25Nm / 19 lb _f •ft
84	81200633	1	FLANGE OPEN
85	81200621	1	OIL BREATHER
86	81200622	1	BACK COVER GASKET
87	81200623	1	CRANK CASE COVER
88	80100604	5	SCREW Torque: 11Nm / 8 lb _f •ft
89	81200624	1	GASKET
90	81200625	1	PLUG Torque: 11Nm / 8 lb _f •ft
91	81200365	1	OIL LEVEL GLASS

**CP20-500 WATER BLASTER
VALVE REPAIR KIT**

Item No./Kit Description	Pos.	Item No.	Qty.	Description
Pos. 38 81200822 VALVE KIT	14	80200611	6	BACK-UP RING
	15	80200608	9	O-RING
	34	81200712	3	DISCHARGE VALVE
	35	80200840	3	BACK UP RING
	37	81200711	3	SUCTION VALVE

Item No./Kit Description	Pos.	Item No.	Qty.	Description
Pos. 71 81200599 / CONNECTING ROD KIT	70	81200636	1	CONNECTING ROD
	69	81200637	1	WRIST PIN
	68	81200638	1	CROSS HEAD

3 set of Connecting Rod Kit are required to overhaul one pump

Item No./Kit Description	Pos.	Item No.	Qty.	Description
Pos. 67 81200704 / PLUNGER REP. KIT	61	81200630	3	PLUNGER NUT
	62	80100398	3	COPPER SEAL
	64	80200610	3	O-RING
	65	81200601	3	RING
	66	81200600	3	PLUNGER DISC

Item No./Kit Description	Pos.	Item No.	Qty.	Description
Pos. 54 81200619 / SEAL REP. KIT	53	81200605	3	LOW PRESSURE SEAL KIT
	52	81200607	3	HIGH PRESSURE SEAL KIT

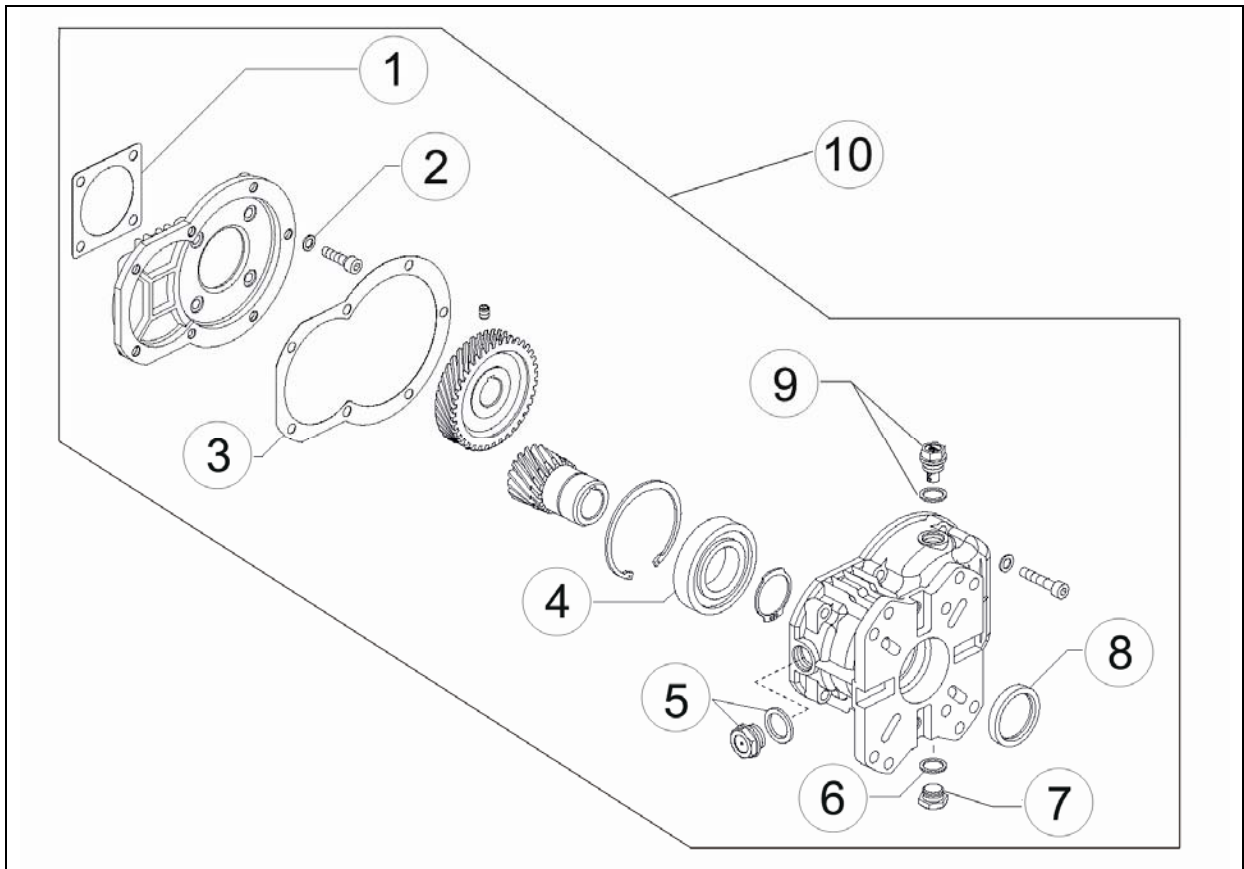
Item No./Kit Description	Pos.	Item No.	Qty.	Description
Pos. 58 81200634 / BACK UP RING REP. KIT	55	81200606	3	BACK UP RING
	56	81200604	3	BRASS RING
	57	80200607	3	O-RING

UNLOADER REPAIR KIT

Item No./Kit Description	Pos.	Item No.	Qty.	Description
81300619 REP. KIT UNLOADER & SAFETY VALVE	2	80200597	1	O-RING
	3	81300595	1	VALVE SEAT
	4	81300559	1	BALL
	11	80200606	1	O-RING
	12	80200605	2	BACK UP RING
	16	80200291	1	O-RING
	21	80200598	1	O-RING
	22	80200604	1	BACK UP RING
	23	80200599	2	O-RING

2 set of Repair Kit are required to overhaul both unloader and safety valve

**CP20-500 WATER BLASTER
GEAR-BOX SPARE-PARTS ASSEMBLY**



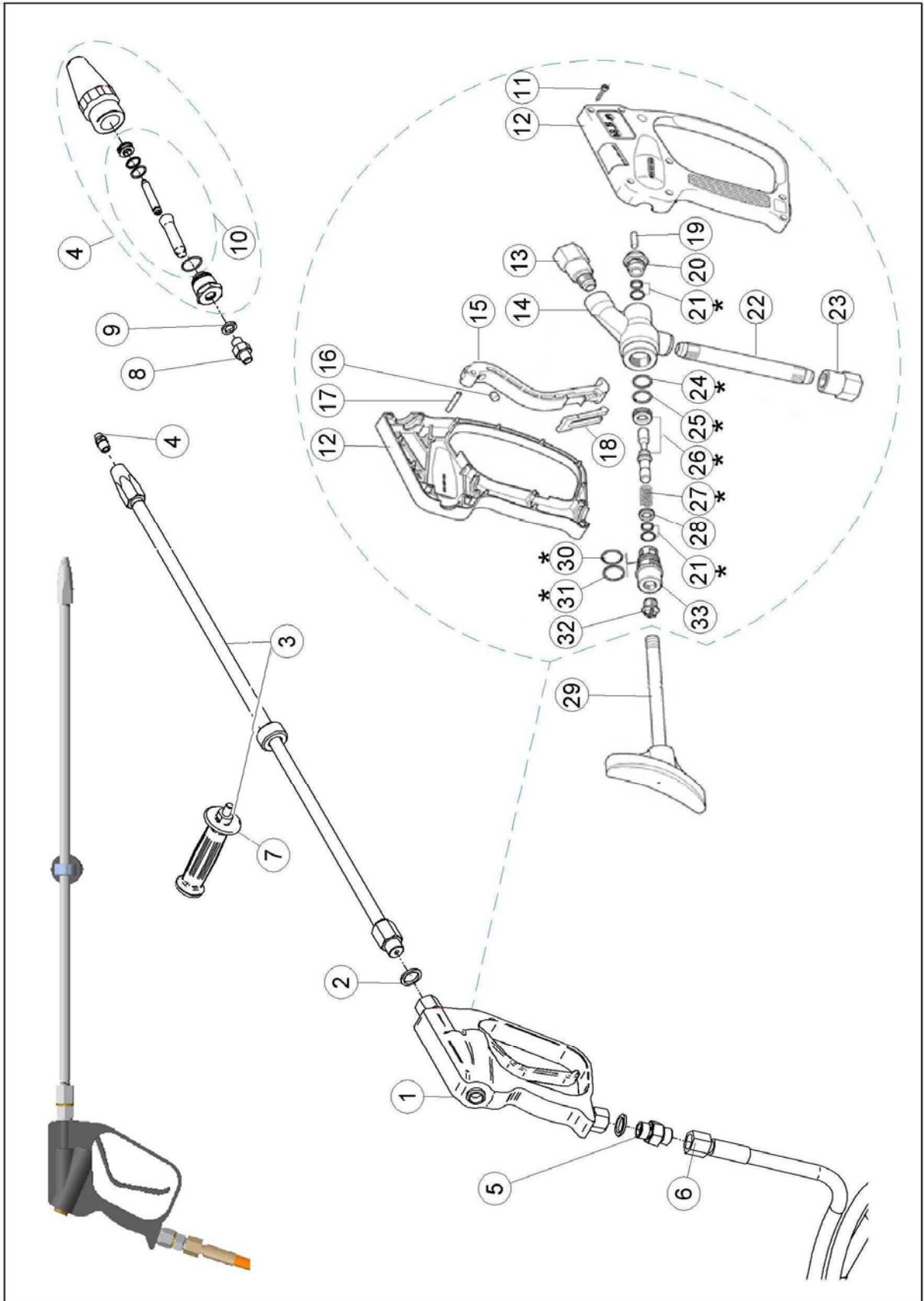
**CP20-500 WATER BLASTER
GEAR-BOX SPARE-PARTS LIST**

Pos.	Item No.	Qty.	Description
4	80400607	1	BEARING
5	81000846	1	SIGHT GLASS WITH PACKING
6	80100640	1	PACKING WASHER DRAIN SCREW
7	80500598	1	DRAIN SCREW
9	81200621	1	OIL FILLER CAP WITH PACKING
10	81000713	1	GEAR BOX COMPLETE (see pos. 23 page 11)

**CP20-500 WATER BLASTER
GEAR BOX SEAL KIT**

Item No./Kit Description	Pos.	Item No.	Qty.	Description
81000843 GEAR BOX SEAL KIT	1	81000845	1	GASKET PUMP HOUSING GEARBOX
	2	80500045	4	BONDED SEAL
	3	81000844	1	GASKET GEAR BOX
	6	80100640	1	PACKING DRAIN SCREW
	8	80200353	1	OIL SEAL

**DRY SHUT GUN 8KPSI
SPARE-PARTS ASSEMBLY**



**DRY SHUT GUN 8KPSI
SPARE-PARTS LIST**

Pos	Item No.	Qty	Description
	81400895		GUN DRY SHUT WO (NOZZLE ,HOSE ,NIPPLE, SHOULDER REST)
1	81400860	1	TRIGGER HANDLE
2	80500429	2	BONDED SEAL
3	81400644	1	LANCE LONG 560BAR 1000mm
4		1	NOZZLE
5	80500375	1	NIPPLE
6	81400776		HOSE (H.P) 20m 1200 BAR W 1/2"BSPP SWIVEL
6	81400639		HOSE (H.P) 20m 1000 BAR W 1/2"BSPP SWIVEL
6	81400962		HOSE (H.P) 20m 500 BAR W 1/2"BSPP SWIVEL
7	81400075	1	SIDE HANDLE
8	80500654	1	NIPPLE
9	80500971	2	BONDED SEAL
10			REP KIT ROTATING NOZZLE
11	80100594	7	SCREW (Not available separately)
12	81400903	1	HOUSING SET (Not available separately)
13	81400902	1	OUTLET FITTING (Not available separately)
14	81400901	1	VALVE HOUSING (Not available separately)
15	81400906	1	TRIGGER (Not available separately)
16	81400905	1	STRIKER (Not available separately)
17	81400904	1	PIN (Not available separately)
18	81400907	1	SAFETY LATCH (Not available separately)
19	81400864	1	ACTUATOR ROD (Not available separately)
20	81400863	1	PLUG (Not available separately)
21	80200694	2	SEAL ASSY. Part of rep. kit 81400861
22	81400900	1	BACK PIPE (Not available separately)
23	81400899	1	INLET FITTING (Not available separately)
24	80200074	1	BACK UP RING Part of rep. kit 81400861
25	80200070	1	O-RING Part of rep. kit 81400861
26	81400898	1	PISTON-SEAT Part of rep. kit 81400861
27	80300613	1	SPRING Part of rep. kit 81400861
28	81400897	1	SPACER (Not available separately)
29	81400231	1	SHOULDER REST
30	80200601	1	O-RING Part of rep. kit 81400861
31	80200693	1	BACK UP RING Part of rep. kit 81400861
32	81400896	1	PLUG (Not available separately)
33	81400862	1	SPRING HOLDER (Not available separately)
*	81400861		REP. KIT FOR GUN 560BAR (Pos.21,24,25,26,27,30,31)

NOZZLE LIST

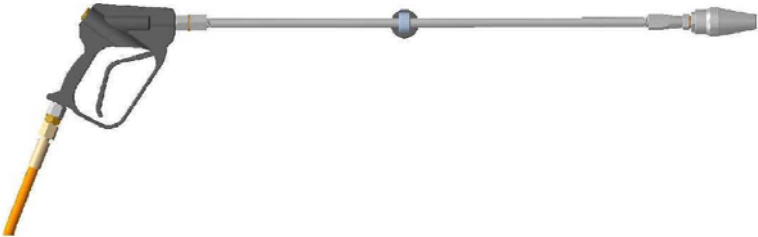
Pos	Item No.	Qty	Description
4	81500618	1	ROTATING NOZZLE 035
10	81500620		REP. KIT ROT. NOZZLE 035
4	81500629	1	NOZZLE STRAIGHT JET 035
4	81500630	1	NOZZLE FAN JET 035/15°

OPERATION PROCEDURE FOR ROTATING NOZZLE

OPERATION PROCEDURE FOR ROTATING NOZZLE

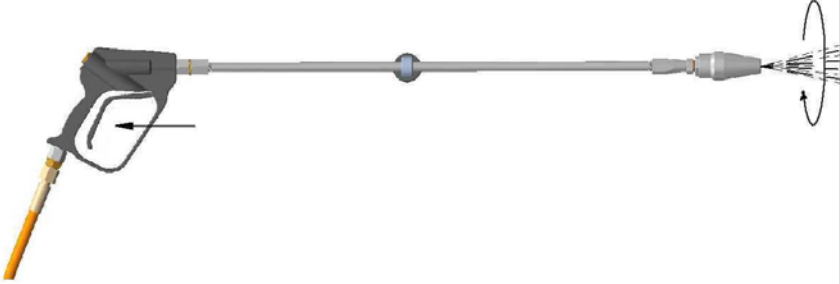
①

HOLD GUN UPRIGHT
NOZZLE FACING DOWN



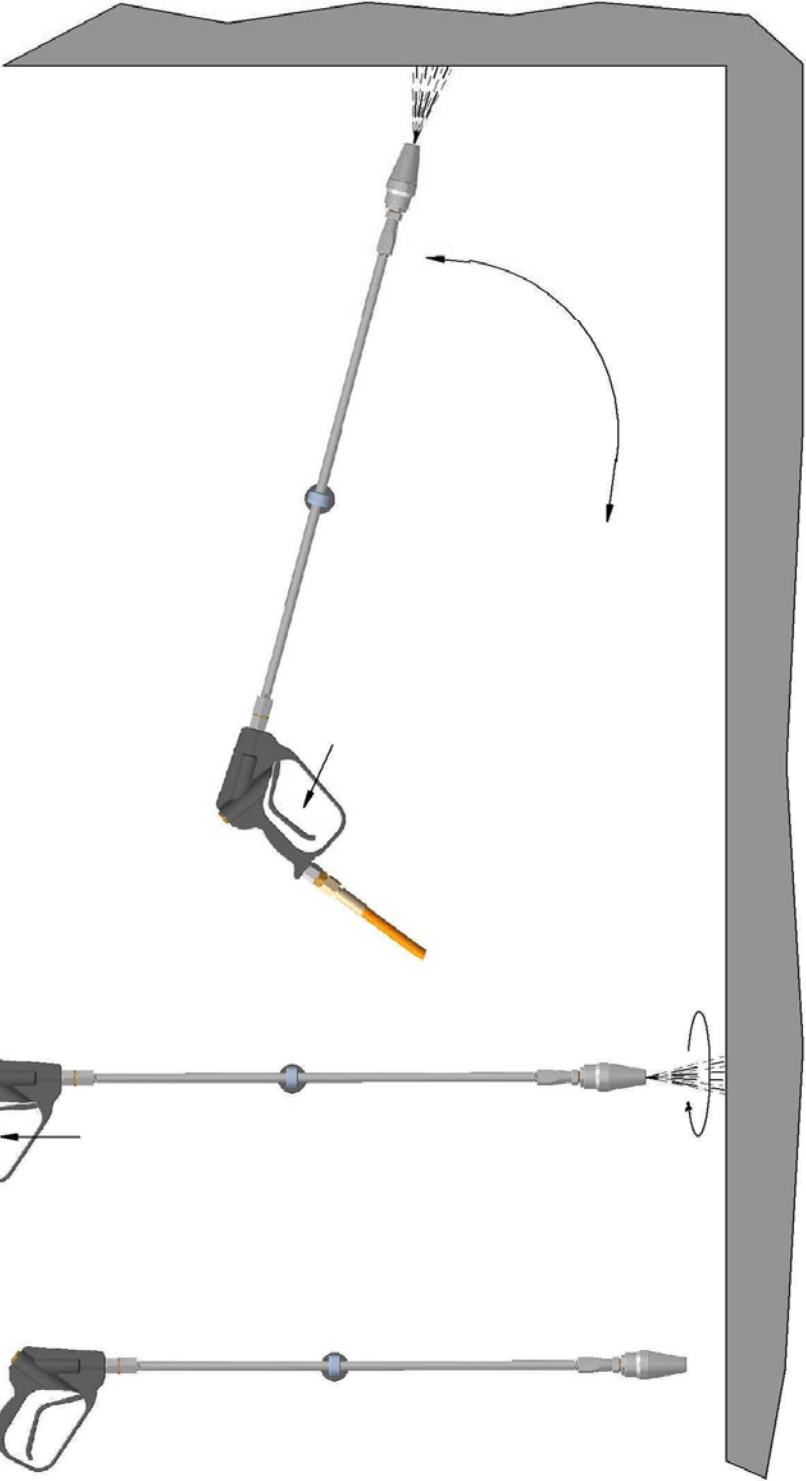
②

SQUEEZE TRIGGER
OBSERVE NOZZLE ROTATE

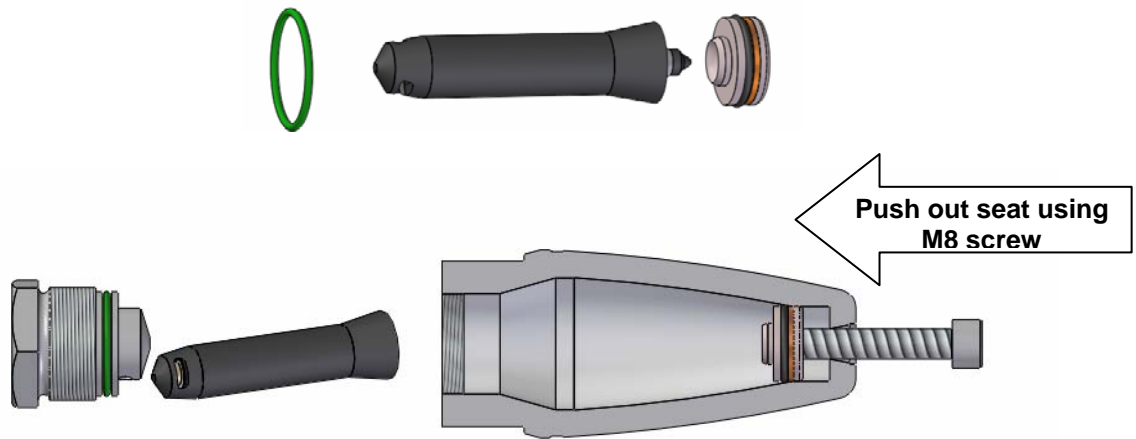


③

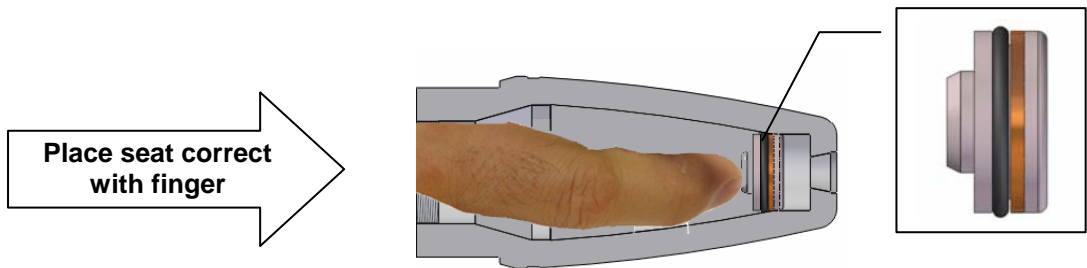
KEEP TRIGGER SQUEEZED
MOVE NOZZLE TO HORIZONTAL BLASTING POSITION



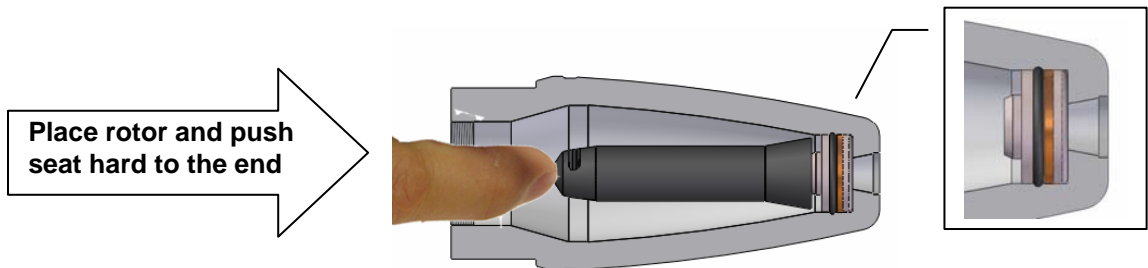
Rotating Nozzle Replacement Procedure Repair Kit



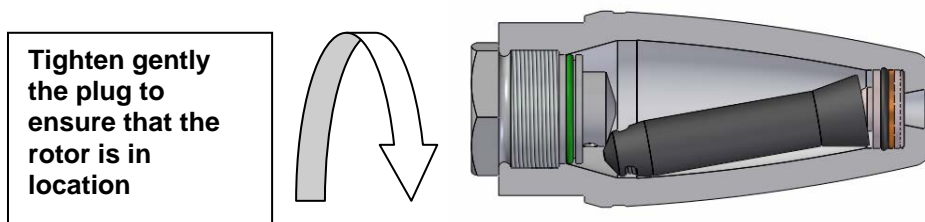
step-1



step-2

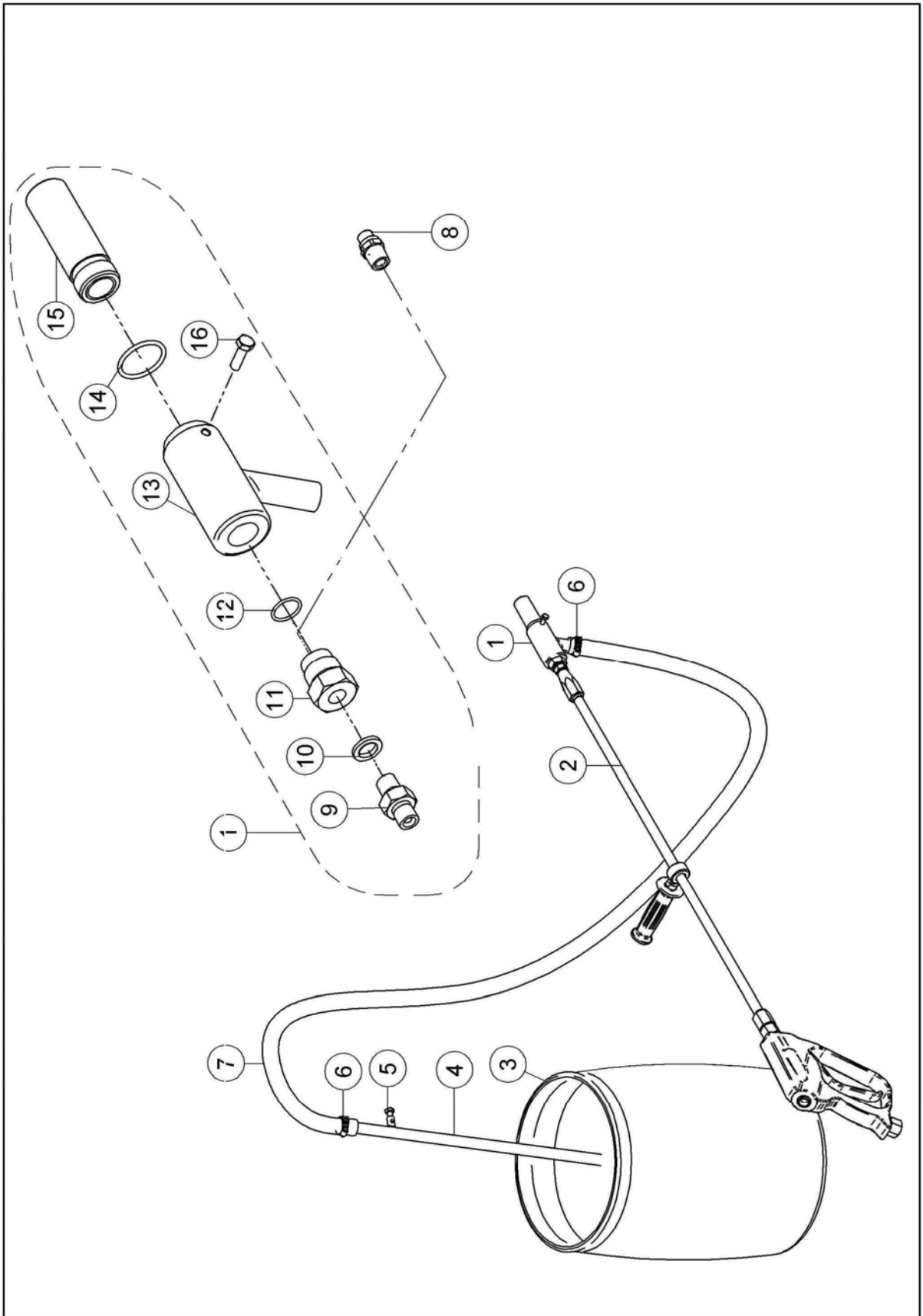


step-3



step-4

**SAND BLASTING EQUIPMENT 1/4" BSPP
SPARE PART ASSEMBLY**



**SAND BLASTING EQUIPMENT 1/4" BSPP
SPARE PART LIST**

Pos.	Item No.	Qty.	Description
1	81400643	1	VENTURI HOUSING COMPLETE FOR 1/4"BSPP FEMALE INLET
2			TRIGGER GUN (NOT INCLUDED)
3	81400641	1	GRIT CONTAINER 120 LITER W/ LID
4	81400629	1	POKER FOR SANDBLASTING EQUIP.
5	80100671	1	SCREW
	80100672	1	NUT
6	80100527	2	HOSE CLIPS
7	83400596	15m	HOSE
8	81500702	1	WATER NOZZLE SAND BLASTING 035
9	80500654	1	NIPPLE
10	80500971	1	BONDED SEAL
11	81400472	1	NOZZLE ADAPTOR 1/4"BSPP FOR VENTURI SAND BLASTER
12	80200057	1	O RING
13	81500469	1	VENTURI SANDBLASTING
14	80200397	1	O-RING
15	81500567	1	NOZZLE S.B BORON CARBIDE
16	80100385	1	SCREW
	81400654		SAND BLASTING KIT 1/4"BSPP W. POKER Pos.(1,4,5,6,7)

Blasting media:

If available, we recommend "Copper slag" 10/30 Grit (0,5mm to 1,8mm) as blasting media.

If using "Quartz sand", use a blend of 0,8mm – 1,8mm, do NOT use too fine sand, it will not flow and it does not give an efficient use of the equipment.